

iSPA-SF1-x

Frequency Synthesizer & RF Driver



0814

SPECIFICATIONS

The iSPA-SF1 single output driver series are designed to operate with Isomet AO modulators, deflectors, tuneable filters and frequency shifters. The driver includes a direct digital synthesizer (DDS) a 32-bit ARM processor (the uC, featuring internal FLASH, RAM, ADC and USBII interface) and single RF amplifier. The driver can be directly controlled in real time via USB or may be pre-programmed for autonomous operation. External controls are applied through a 25way D-type connector. (External inputs are not necessary to operate the driver).

On power-up, the uC configures the DDS and loads a user defined frequency / phase / amplitude "MAP" previously stored in FLASH memory. The internal memory may store up to 8 unique MAP's.

Each MAP may contain up to 16 independent frequency values. These are selected by the profile address inputs using PC control or external inputs to the 25way D-connector. The driver can also be configured to output frequency sweeps.

Windows based GUI software supplied

Output frequency range:

Model	Variant	Frequency range	RF output power
iSPA-SF1-	w	20-200 MHz	1.2 W
	y	24-48 MHz	4 W
	a	30-60 MHz	4 W
	b	60-100 MHz	4 W
	c	80-130 MHz	4 W
	d	125-175 MHz	2 W
	e	150-250 MHz	2 W

Frequency resolution (full range): 32 bit inherent,
1Hz using the Isomet GUI software.

Frequency stability: +/- 25ppm (common mode)

Maximum Power, RFoutput: see table
Ref Out: > 100mWpp, 50ohm

Output power flatness: < +/- 1dB / octave

Harmonics: < 25dBc

RF power adjustment: > 30dB range via external analog modulation input.
> 60dB range via digital control

ALL SPECIFICATIONS SUBJECT TO CHANGE WITHOUT NOTICE

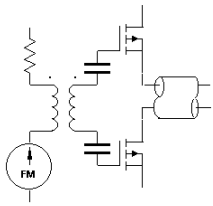
ISOMET CORP, 5263 Port Royal Rd, Springfield, VA 22151, USA.

Tel: (703) 321 8301 Fax: (703) 321 8546

E-mail: ISOMET@ISOMET.COM Web Page: WWW.ISOMET.COM

Quality Assured.

**In-house: RF & Digital design
Software Development
OEM manufacture**



iSPA-SF1-x

Frequency Synthesizer & RF Driver

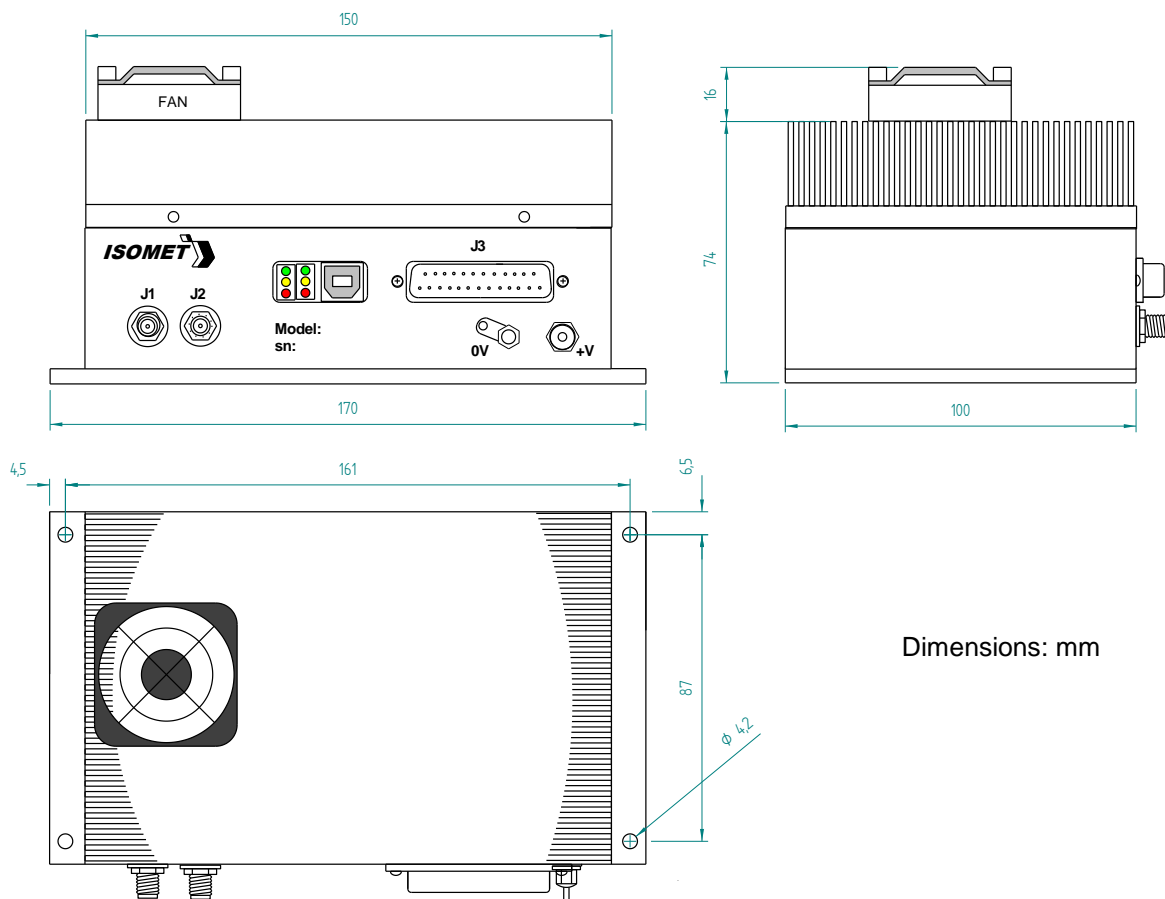


0814

Interface

Output (x2):	Signal:	J1: Main RF output, 50ohm, SMA connector	
		J2: Low level reference output, 50ohm, SMA connector	
Inputs:	Control Inputs:	External:	25way male D-type
		Logic signals:	LVTTTL, 3V3 compatible
		Analog Modulation/Level:	0 – 5V
	Host PC:	USB II	
	DC power:	24V at < 0.6A, solder feed through	

OUTLINE DRAWING



Dimensions: mm

ALL SPECIFICATIONS SUBJECT TO CHANGE WITHOUT NOTICE
 ISOMET CORP, 5263 Port Royal Rd, Springfield, VA 22151, USA.
 Tel: (703) 321 8301 Fax: (703) 321 8546
 E-mail: ISOMET@ISOMET.COM Web Page: WWW.ISOMET.COM

Quality Assured.
 In-house: RF & Digital design
 Software Development
 OEM manufacture