

iMPA4-1W

Four Channel RF amplifier



1115

The four channel iMPA4-1W provides a convenient means of amplifying external low level frequency sources. It is particularly suited to the Isomet IMS4-L or IMS4-P Quad output synthesizers. With an output power of > 1.0W per channel, the iMPA4-1W is directly compatible with a range of Isomet Acousto-optic devices.

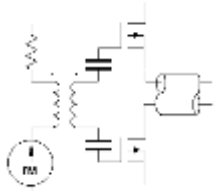
A common RF Gate input signal controls all four output channel.

PRELIMINARY SPECIFICATIONS

Channels:	4, independent
RF Input/Output Impedance:	50 ohms
RF Input Level:	0.0 dBm (maximum)
RF Frequency Range:	20-200 MHz
Gain:	36 dB (nominal)
Maximum Output Power	
20-120MHz	>1.5W
120-200MHz	>1.0W
Gate Input:	5.0 Volts (maximum)
DC Power Input:	+24.0 Vdc @ 1400 mA
Temperature Range:	0 °C to +50 °C ambient
Mounting Orientation:	Any
Dimensions:	See Outline (Reverse Side)

ALL SPECIFICATIONS SUBJECT TO CHANGE WITHOUT NOTICE
ISOMET CORP, 5263 Port Royal Rd, Springfield, VA 22151, USA.
Tel: (703) 321 8301 Fax: (703) 321 8546
E-mail: ISOMET@ISOMET.COM Web Page: WWW.ISOMET.COM

Quality Assured.
In-house: RF & Digital design
Software Development
OEM manufacture



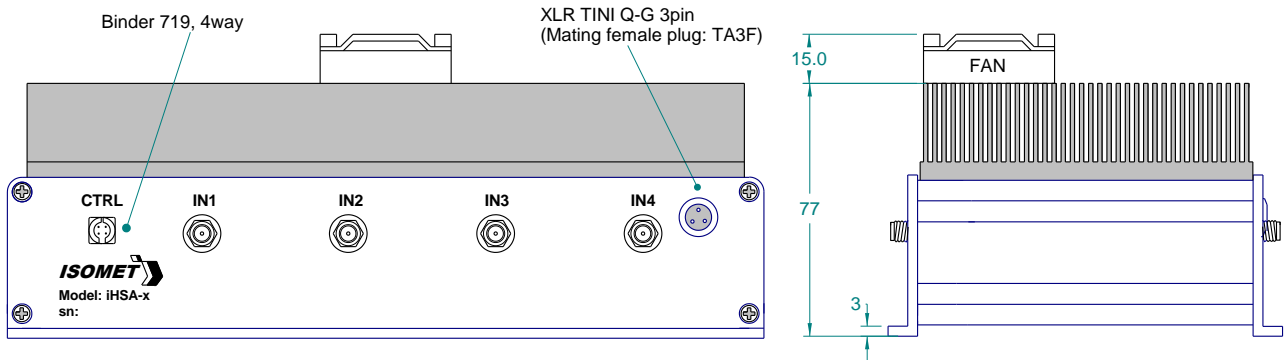
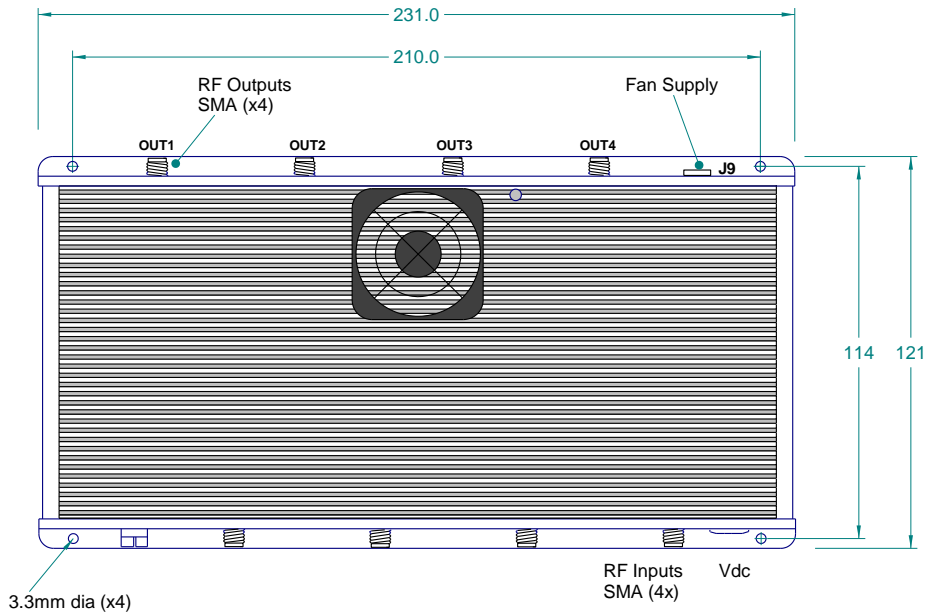
iMPA4-1W

Four Channel RF amplifier



1115

OUTLINE DRAWING



ALL SPECIFICATIONS SUBJECT TO CHANGE WITHOUT NOTICE
 ISOMET CORP, 5263 Port Royal Rd, Springfield, VA 22151, USA.
 Tel: (703) 321 8301 Fax: (703) 321 8546
 E-mail: ISOMET@ISOMET.COM Web Page: WWW.ISOMET.COM

Quality Assured.
 In-house: RF & Digital design
 Software Development
 OEM manufacture