

RFA910T-nn-x

Tuneable RF Driver



1208

The Model RFA910T Series of Tuneable Deflector Drivers are class A solid-state RF source designed to drive *ISOMET* Acousto-Optic Scanners with up to 10.0 Watts total power across a nominal ± 1 octave bandwidth centered at a frequency of "nn" MHz (see table below)

The driver features a 0 to +10 volts control input to tune the output frequency and a 0 to +10 volt analog modulation input signal to control the amplitude of the RF output. Maximum gain is externally adjustable via a pre-set potentiometer. A water cooled option is available.

	<u>Freq</u>	<u>Options</u>	
RFA910T	- nn	- x	
22 – 38 MHz	30	F	Fan
30 – 50 MHz	40	B	BNC connector
60 - 100MHz	80	W	Water cooled

SPECIFICATIONS

Oscillator Type:	Varactor-tuned thin film hybrid
Power Out:	10 Watts Maximum CW into 50Ω
Load VSWR:	< 2.5:1 for best results
Output RF Power Variation vs.Freq:	≤ 1 dB
Spurious Outputs:	Harmonics > 20dB below fundamental
Tuning Range:	see table
Tuning Voltage (Vt):	0 to 10V for specified tuning range
Tuning Linearity:	< +/- 2.5% over specified tuning range
Tuning Voltage Impedance:	1Kohm (nominal)
Tuning Slew Rate	> 10 MHz/μs
Residual FM:	< 10 KHz peak-to-peak
Frequency Stability:	±0.25%
Video Input Voltage (MOD):-	
Analogue:	0-10V for 100% depth of modulation, DC coupled
Input Impedance:	50 ohm (nominal)
RF ON-OFF Ratio:	> 37 dB
RF Amplitude rise/fall time	< 10nsec
DC Power Input:	+15Vdc at < 2A regulated to ± 0.25% (+24Vdc version available)
Temperature Range:	0°C to 60°C ambient, temperature of heatsink must not exceed 70°C.
Mounting Orientation:	Any

ALL SPECIFICATIONS SUBJECT TO CHANGE WITHOUT NOTICE

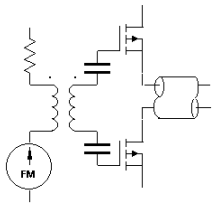
ISOMET CORP, 5263 Port Royal Rd, Springfield, VA 22151, USA.

Tel: (703) 321 8301 Fax: (703) 321 8546

E-mail: ISOMET@ISOMET.COM Web Page: WWW.ISOMET.COM

Quality Assured.

In-house: RF & Digital design
Software Development
OEM manufacture



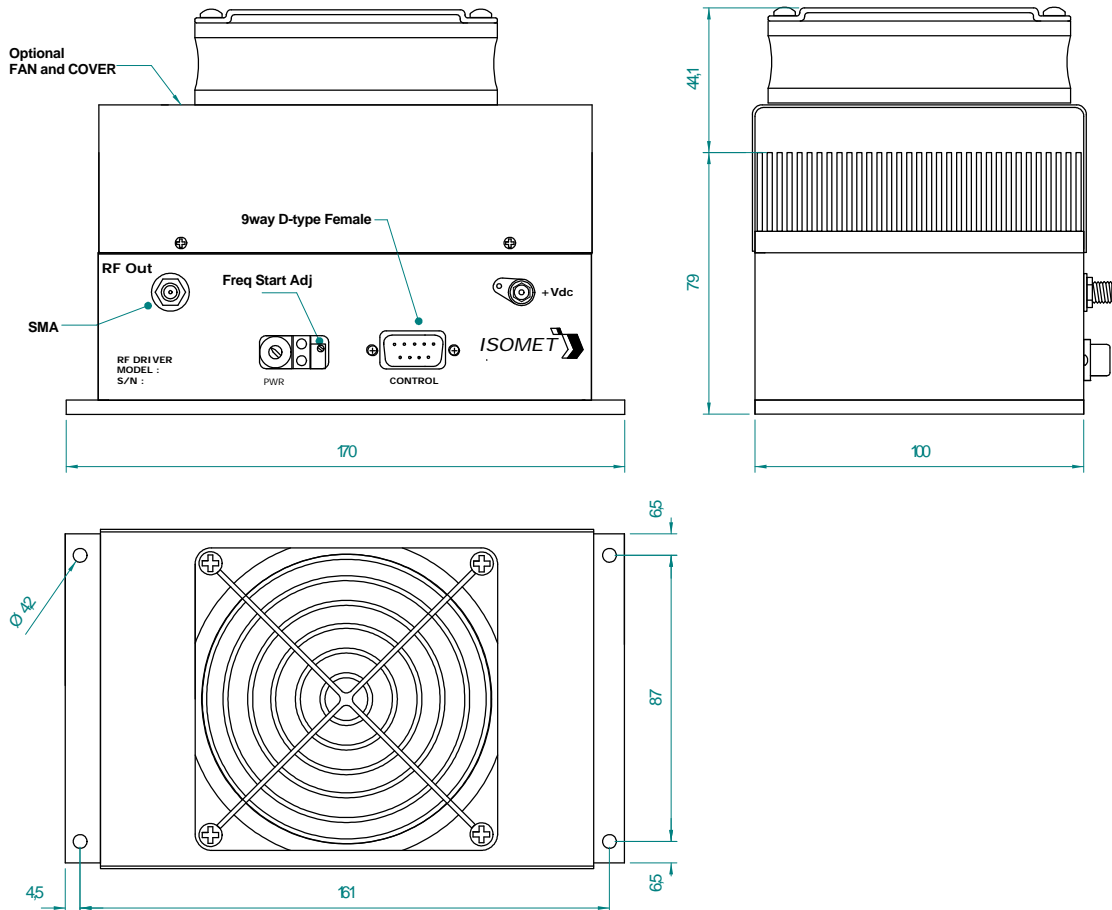
RFA910T-nn-x

Tuneable RF Driver



1208

OUTLINE DRAWING



Control signals	-	:	9 pin 'D' type
Tuning Voltage		:	+sig pn1, -rtn pn6
Amplitude Control		:	+sig pn8, -rtn pn3
Enable/Interlock Control		:	+sig pn9, -rtn pn4
Interlock monitor		:	+sig pn7, -sig pn2

ALL SPECIFICATIONS SUBJECT TO CHANGE WITHOUT NOTICE
 ISOMET CORP, 5263 Port Royal Rd, Springfield, VA 22151, USA.
 Tel: (703) 321 8301 Fax: (703) 321 8546
 E-mail: ISOMET@ISOMET.COM Web Page: WWW.ISOMET.COM

Quality Assured.
 In-house: RF & Digital design
 Software Development
 OEM manufacture