

RFA4556-2

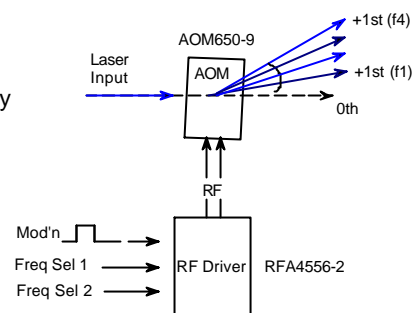
RF Driver/Amplifier



0812

The RFA4556-2 is a combined multi-frequency oscillator and power amplifier suitable for driving the AOM650-H series of high power AO Modulator/Deflector. This driver features digital modulation (On:Off) control of the RF amplitude. The drive frequency can be rapidly switched between 40, 46.7, 53.3 and 60MHz for quad spot applications using the frequency select inputs. Protection includes an internal over temperature switch, and a 'TranZorb' over voltage diode on the DC supply input. An external interlock (or RF enable) input is provided.

The RFA4556-2 will operate from a +24V to +28Vdc supply. LED's indicate the status of the thermal interlocks, DC supply on and RF power live. The maximum RF output power for each frequency can be adjusted independently by means of (manual) pre-set potentiometers or remotely using non-volatile 100 step digital potentiometers (DP).



The digital pot inputs are opto-isolated and compatible with open collector 24V controllers. The amplifier includes an integral water-cooled heatsink.

SPECIFICATION

Power Output (Total)	:	> 130 Watts Max CW (28V supply) > 110 Watts Max. CW (24V supply)
Load Impedance	:	50Ω
RF Outputs	:	BNC (2 off)
Harmonic Distortion	:	>20dB below fundamental
Mismatch Tolerance	:	The Driver will not oscillate
Center Frequency	:	40 MHz / 46.7MHz / 53.3MHz / 60 MHz
Frequency Select	:	TTL compatible, 2-bit decode
Frequency stability	:	± 0.003%
Frequency accuracy	:	± 0.003%
Modulation Control Voltage	:	TTL Compatible (> 2.7V, RF O/P=on)
RF ON to OFF Ratio	:	40dB below full power
Output Switching Speed	:	< 0.25μs Rise/Fall, 0 to 50 Watts
Interlock	:	Open OFF, closed ON, Sink 20mA at 12V
Power Supply	:	+24V to +28Vdc, 0.25% regulation, < 12A
Power Input	:	Feed through filter solder tag
Temperature Range	:	0° to 60°C, Thermal Shutdown Interlock

Logic table

Decoding applies to both digital pot (DP) programming and the output frequency selection.

Frequency MHz	Bit2	Bit1
40.0	0	0
46.7	0	1
53.3	1	1
60.0	1	0

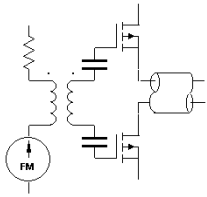
ALL SPECIFICATIONS SUBJECT TO CHANGE WITHOUT NOTICE

ISOMET CORP, 5263 Port Royal Rd, Springfield, VA 22151, USA.

Tel: (703) 321 8301 Fax: (703) 321 8546

E-mail: ISOMET@ISOMET.COM Web Page: WWW.ISOMET.COM

Quality Assured.
In-house: RF & Digital design
Software Development
OEM manufacture



RFA4556-2

RF Driver/Amplifier



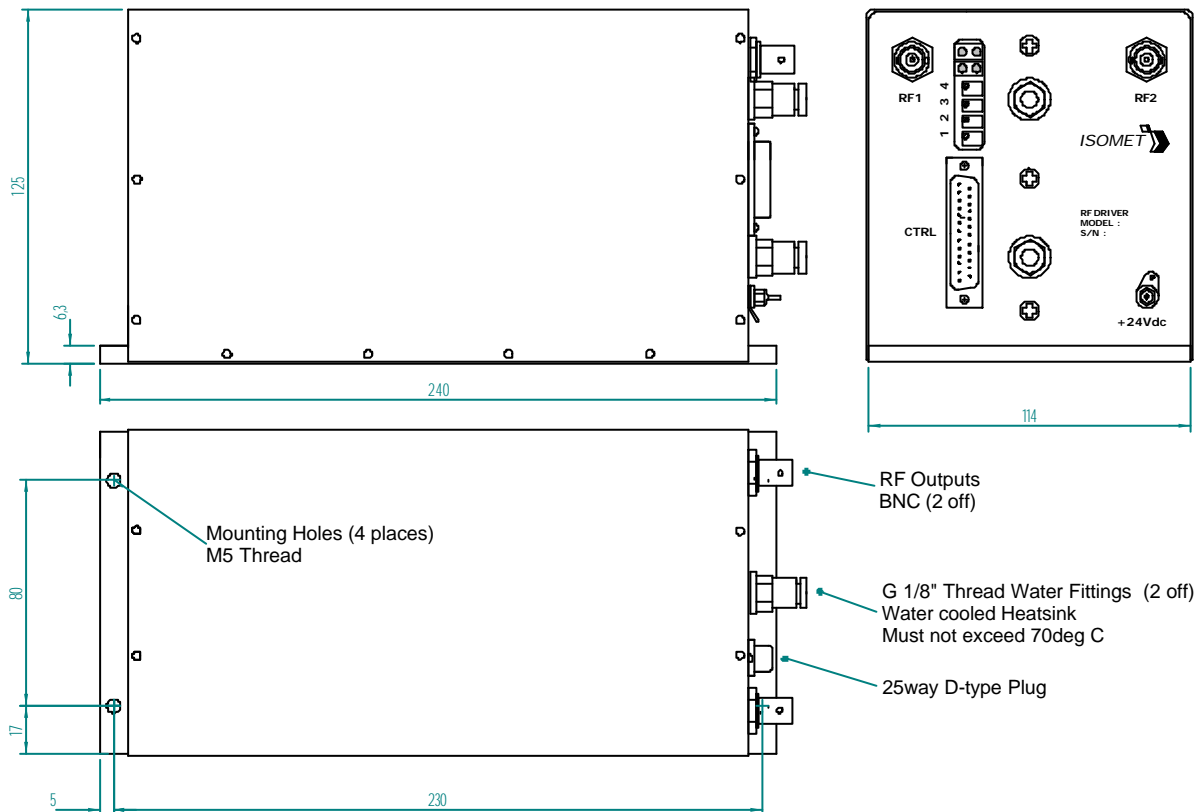
0812

<u>Control signals</u>	<u>25 pin 'D' type Male</u>
Frequency Select logic, Bit1	: +sig pn13, -rtn pn25 (TTL/CMOS)
Frequency Select logic, Bit2	: +sig pn12, -rtn pn24 (TTL/CMOS)
Modulation Control	: +sig pn11, -rtn pn23 (TTL/CMOS)
(Reserved)	: +sig pn10, -rtn pn22
Isolated OPTO Supply input	: +24V dc pn9
DP write enable	: +sig pn8, -rtn pn21
DP / Manual Pot Select	: +sig pn7, -rtn pn20 (Open=Manual, Closed=DP)
DP increment/decrement clock	: +sig pn6, -rtn pn19
DP UP/DOWN control	: +sig pn5, -rtn pn18 (Open=Decrease, Closed=Increase)
DP Adjust Select, Bit1	: +sig pn4, -rtn pn17
DP Adjust Select, Bit2	: +sig pn3, -rtn pn16
Interlock monitor, CMOS open drain	: +sig pn2, -rtn pn15 (Closed= OK)
Interlock enable (connect to AO)	: +sig pn1, -rtn pn14 (Closed = on)

OUTLINE DRAWING

RF Amplifier Outline

Dimensions : mm
1" = 25.4mm



ALL SPECIFICATIONS SUBJECT TO CHANGE WITHOUT NOTICE
 ISOMET CORP, 5263 Port Royal Rd, Springfield, VA 22151, USA.
 Tel: (703) 321 8301 Fax: (703) 321 8546
 E-mail: ISOMET@ISOMET.COM Web Page: WWW.ISOMET.COM

Quality Assured.
In-house: RF & Digital design
Software Development
OEM manufacture