

RFA333-2

RF Driver / Amplifier (Phase Delayed – Dual Output)



0215

The Model RFA333-2 Deflector Driver is a class A solid-state RF source designed to drive *ISOMET* beam steered Acousto-Optic Scanners with up to 20.0 Watts total power across a 40MHz minimum bandwidth in the frequency range of 90 to 140 MHz.

The driver control signals include 0 to +10 volt frequency tuning input and 0 to +10 volt amplitude modulation input. Each output delivers > 10 Watt RF. Maximum gain is externally adjustable via a pre-set potentiometer. The start frequency is also adjustable and is set by the frequency offset potentiometer (FOS). An internal delay line introduces the correct phasing between the RF outputs, specific to the AO deflector. The base plate is water cooled.

SPECIFICATION

Oscillator Type:	Varactor-tuned thin film hybrid
Power Output, total (X1 + X2):	> 20 Watts CW maximum into 50Ω
Phase delay between outputs:	AO deflector dependant
Load VSWR:	< 2.5:1 for best results
Output RF Power Variation vs.Freq:	≤ 1 dB
Spurious Outputs:	Harmonics > 20dB below fundamental
Tuning Range:	90-130MHz , 100-140MHz (FOS defines)
Tuning Voltage (Vt):	0 to 10V for specified tuning range
Frequency Offset range (FOS):	+/- 20MHz minimum
Tuning Linearity:	< +/- 1.5% over specified tuning range
Tuning Voltage Impedance:	1Kohm (nominal)
Tuning Slew Rate	> 10 MHz/μs
Residual FM:	< 10 KHz peak-to-peak
Frequency Stability:	±0.25%
Video Input Voltage (MOD):-	
Analogue:	0-10V for 100% depth of modulation, DC coupled
Input Impedance:	600 ohm (nominal)
RF ON-OFF Ratio:	> 37 dB
RF Amplitude rise/fall time	< 50nsec
DC Power Input:	+24Vdc at 3A regulated to ± 0.25%
Temperature Range:	0°C to 50°C ambient, temperature at mounting face must not exceed 60°C. Water cooling available.
Power Input	: Feed through filter solder tag
Dimensions	: (See reverse)

ALL SPECIFICATIONS SUBJECT TO CHANGE WITHOUT NOTICE

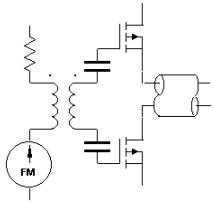
ISOMET CORP, 5263 Port Royal Rd, Springfield, VA 22151, USA.

Tel: (703) 321 8301 Fax: (703) 321 8546

E-mail: ISOMET@ISOMET.COM Web Page: WWW.ISOMET.COM

Quality Assured.

**In-house: RF & Digital design
Software Development
OEM manufacture**



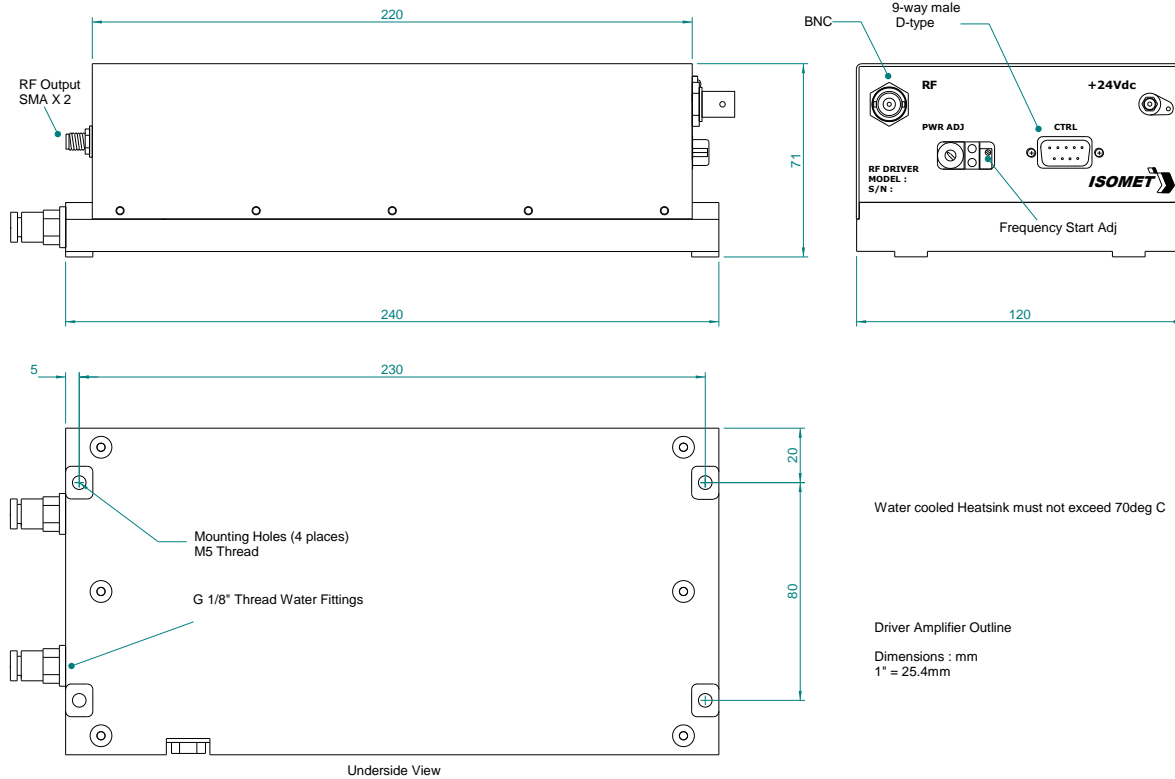
RFA333-2

RF Driver / Amplifier (Phase Delayed – Dual Output)



0215

OUTLINE DRAWING



Control signals	-	:	9 pin 'D' type
Tuning Voltage		:	+sig pn1, -rtn pn6
Amplitude Control		:	+sig pn8, -rtn pn3
Enable/Interlock Control		:	+sig pn9, -rtn pn4
Interlock monitor		:	+sig pn7, -sig pn2

ALL SPECIFICATIONS SUBJECT TO CHANGE WITHOUT NOTICE
 ISOMET CORP, 5263 Port Royal Rd, Springfield, VA 22151, USA.
 Tel: (703) 321 8301 Fax: (703) 321 8546
 E-mail: ISOMET@ISOMET.COM Web Page: WWW.ISOMET.COM

Quality Assured.
In-house: RF & Digital design
Software Development
OEM manufacture