

# RFA240-2-x

## RF Driver/Amplifier



1011

The RFA240-2-x is a combined 40 MHz oscillator and power amplifier suitable for driving Isomet High Power Acousto-optic modulators such as the AOM640-x series. This driver features a fast modulation input that is factory configured for digital (On:Off) or analog (proportional) control of the RF amplitude plus a secondary digital RF gate input. Protection includes an internal over temperature sensor, and a 'TranZorb' over voltage diode on the DC supply. An external interlock (or enable) input is provided. The amplifier includes an integral water-cooled heatsink. Available options (-x) are listed below.

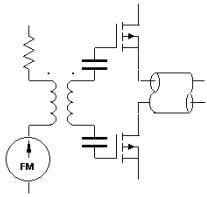
The RFA240-2 will operate from a +24V to +28Vdc supply. An LED indicates when the RF outputs are 'live'. The maximum RF output power is set by a front panel single turn potentiometer

### SPECIFICATION

Power Output (total)	:	> 160 Watts Max. CW (28V supply) > 140 Watts Max. CW (24V supply)
Load Impedance	:	50Ω
Harmonic Distortion	:	>20dB below fundamental
Mismatch Tolerance	:	The Driver will not oscillate
Center Frequency	:	40 MHz
Frequency stability	:	± 0.003%
Frequency accuracy	:	± 0.003%
Modulation Control Voltage	:	
Digital (-D)	:	TTL compatible (> 2.7V, RF O/P=ON)
Analog	:	0.0 to 10.0V, 1kohm i/p impedance (nominal)
RF ON to OFF Ratio	:	40dB below full power
Output Switching Speed	:	< 0.25μs Rise/Fall, 0 to 50 Watts
Interlock	:	Open OFF, closed ON, Sink 20mA at 24V
Power Supply	:	+24V to +28Vdc, 0.25% regulation, < 14A
Temperature Range	:	0° to 60°C, Thermal Shutdown Interlock
RF Output	:	BNC (2 off)
Control signals -	:	15 pin 'D' type Male
RF Gate, Digital	:	+sig p8, -rtn p15 (TTL level compatible)
Amplitude Modulation Control	:	+sig p7, -rtn p14
Interlock enable (connect to AO)	:	+sig pn1, -rtn pn9 (closed = on)
Driver Enabled monitor, open collector	:	+sig p2, -sig p10 (low = OK)
Power Input	:	Feed through filter solder tag
Dimensions	:	(See reverse)

**ALL SPECIFICATIONS SUBJECT TO CHANGE WITHOUT NOTICE**  
 ISOMET CORP, 5263 Port Royal Rd, Springfield, VA 22151, USA.  
 Tel: (703) 321 8301 Fax: (703) 321 8546  
 E-mail: [ISOMET@ISOMET.COM](mailto:ISOMET@ISOMET.COM) Web Page: [WWW.ISOMET.COM](http://WWW.ISOMET.COM)

**Quality Assured.**  
**In-house: RF & Digital design**  
**Software Development**  
**OEM manufacture**



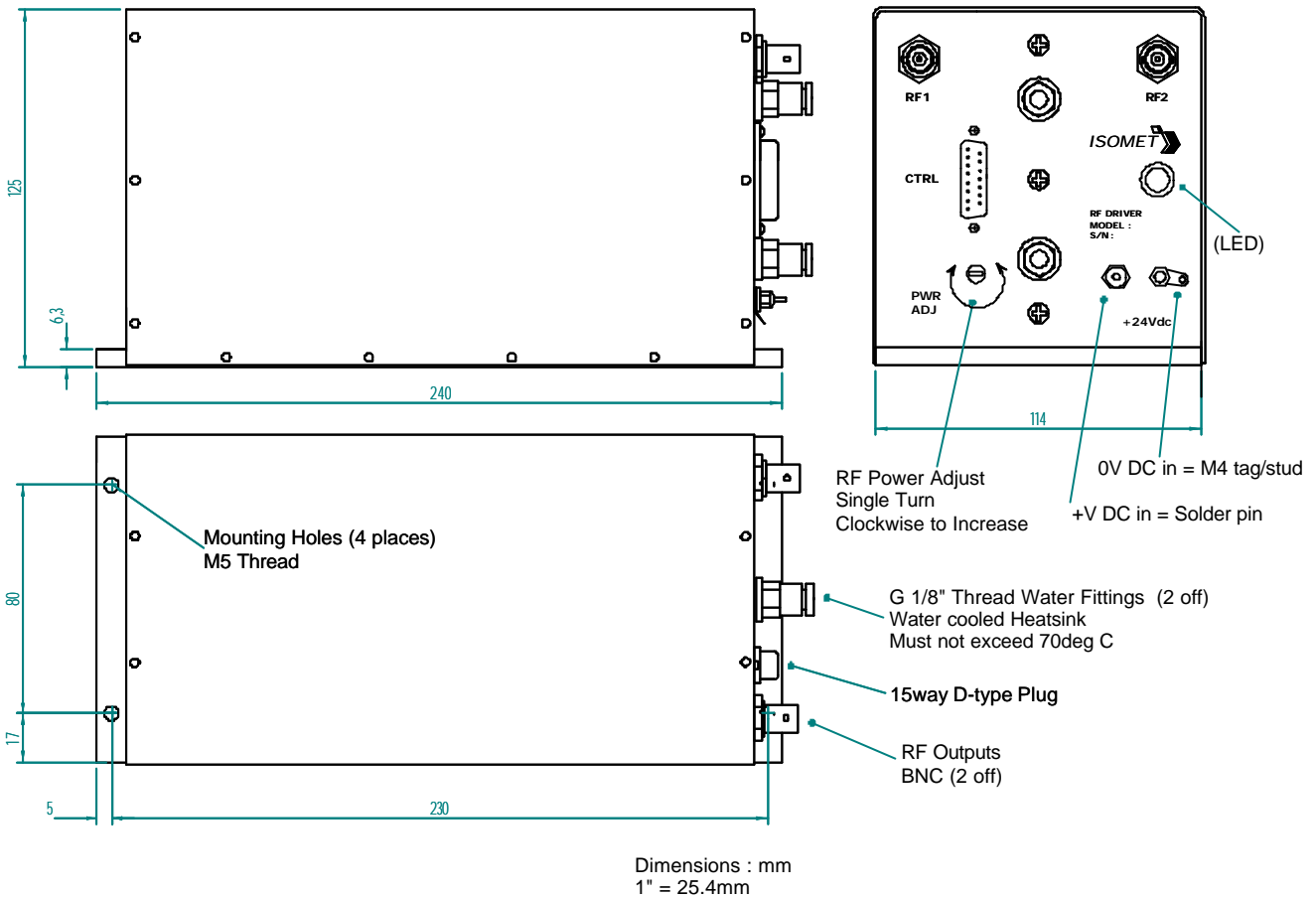
# RFA240-2-x

## RF Driver/Amplifier



1011

### OUTLINE DRAWING



#### Options -x, multiple combinations possible:

- V : 0-5V analog modulation range
- L : RF gate input not necessary
- D : digital modulation, fast input
- Mxx : Max power limited to xx Watts
- BR : Brass water cooled heatsink

ALL SPECIFICATIONS SUBJECT TO CHANGE WITHOUT NOTICE

ISOMET CORP, 5263 Port Royal Rd, Springfield, VA 22151, USA.

Tel: (703) 321 8301 Fax: (703) 321 8546

E-mail: [ISOMET@ISOMET.COM](mailto:ISOMET@ISOMET.COM) Web Page: [WWW.ISOMET.COM](http://WWW.ISOMET.COM)

Quality Assured.  
In-house: RF & Digital design  
Software Development  
OEM manufacture