

RFA200-2

RF Amplifier

(Dual Output PA for use with beam steered AOD's)



0914

The Model RFA200-2 water-cooled amplifier is a Class-A solid-state unit designed to drive the *ISOMET* AOM600 series beam steered Acousto-Optic Scanner with up to 140 Watts total power in the 35 to 65 MHz frequency band. The amplifier has two RF inputs and two 70 Watt (min) outputs. The inputs are compatible with the *ISOMET* high speed, multi output frequency synthesizers. The amplifier also features digital and analog modulation inputs for the control of the RF amplitude. Protection includes an internal over temperature sensor, and a 'TranZorb' over voltage diode on the DC supply input. An external interlock (or RF enable) input is provided for connection to the AO device thermal interlock.

An LED indicates when the RF outputs are 'live'. The amplifier requires a +24V or +28V regulated DC power supply and exhibits a nominal gain of 47dB.

SPECIFICATIONS

Power Out, Each Output (RF1, RF2)	> 70Watts CW into 50Ω *
Optimized Frequency Response:	40-60 MHz (30-50MHz on request)
Flatness:	± 0.5dB
Gain to Each Output:	50dB nominal
Input Signal (IN1, IN2):	3dBm nominal
Input Impedance:	50Ω nominal
Output Impedance:	50Ω nominal
Input VSWR:	< 2.0:1
Harmonic Distortion:	> 25dB below fundamental
RF Rise/fall time:	< 300/50ns
Power Supply Requirement (DC):	12.0A at +24V (or +28V) *
Power Input:	Feed through filter solder tag
Dimensions:	(See reverse)
Maximum Allowable Case Temperature:	60°C
Minimum Allowable Case Temperature:	0°C

ALL SPECIFICATIONS SUBJECT TO CHANGE WITHOUT NOTICE

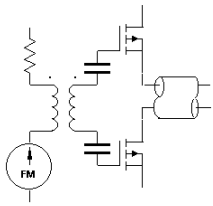
ISOMET CORP, 5263 Port Royal Rd, Springfield, VA 22151, USA.

Tel: (703) 321 8301 Fax: (703) 321 8546

E-mail: ISOMET@ISOMET.COM Web Page: WWW.ISOMET.COM

Quality Assured.

In-house: RF & Digital design
Software Development
OEM manufacture



RFA200-2

RF Amplifier

(Dual Output PA for use with beam steered AOD's)



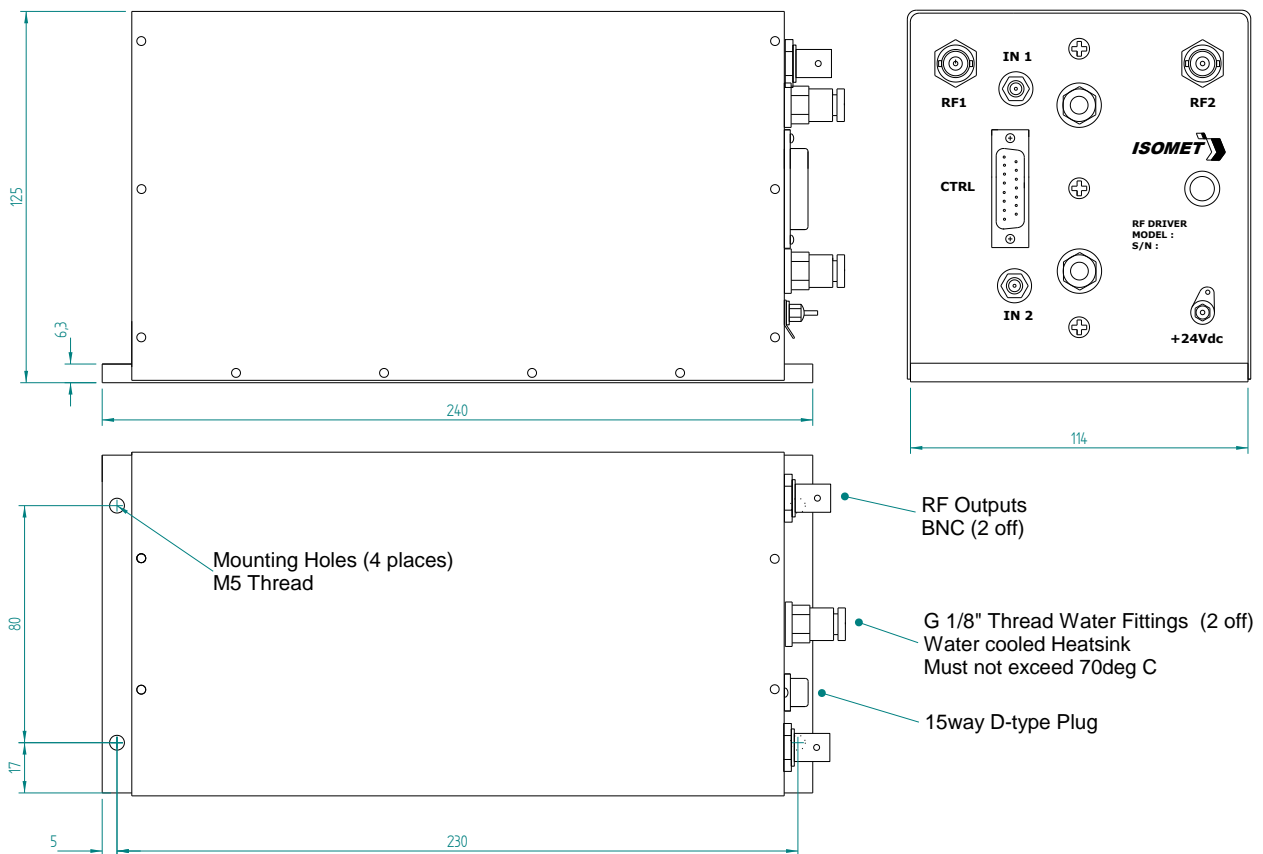
0914

Control signals -		<u>15 pin 'D' type Male</u>
Amplitude Control, Digital	:	+sig pn8, -rtn pn15
Amplitude Control, Analog	:	+sig pn7, -rtn pn14
Interlock enable (connect to AO)	:	+sig pn1, -rtn pn9 (closed = on)
Interlock monitor, CMOS open drain	:	+sig pn2, -rtn pn10 (low = OK)

OUTLINE DRAWING

RF Amplifier Outline

Dimensions : mm
1" = 25.4mm



ALL SPECIFICATIONS SUBJECT TO CHANGE WITHOUT NOTICE
 ISOMET CORP, 5263 Port Royal Rd, Springfield, VA 22151, USA.
 Tel: (703) 321 8301 Fax: (703) 321 8546
 E-mail: ISOMET@ISOMET.COM Web Page: WWW.ISOMET.COM

Quality Assured.
In-house: RF & Digital design
Software Development
OEM manufacture