

RFA141

RF Driver / Amplifier



1014

The RFA141 is a combined 40 MHz oscillator and power amplifier suitable for driving Isomet acousto-optic modulators such as models 1202-4. This driver features both digital gate and analog modulation inputs for the control of the RF amplitude. Protection includes an internal over temperature sensor, and a 'Tranzorb' over-voltage diode on the DC supply input. An external interlock (or RF enable) input is provided.

The RFA141 will operate from a +24V to +28Vdc supply. LED's indicate the status of the thermal interlocks, DC supply and the RF power activity. The RF output power limit is adjusted by means of a pre-set potentiometer.

The amplifier includes an integral water-cooled base. The unit can be supplied with the coolant fittings located at the front (RFA141) or rear (RFA141 -R). See options.

SPECIFICATION

Power Output	:	35 Watts Max CW (28V supply) 30 Watts Max. CW (24V supply)
Load Impedance	:	50Ω
Harmonic Distortion	:	>20dB below fundamental
Mismatch Tolerance	:	Driver will not oscillate
Centre Frequency	:	40.0 MHz
Frequency stability	:	± 25ppm
Frequency accuracy	:	± 25ppm
Modulation Control Voltage	:	
Digital	:	TTL compatible (> 2.7V, RF active)
Analog	:	0.0 to 10.0V, 3Kohm i/p impedance (nominal)
RF ON to OFF Ratio	:	40dB below full power
Output Switching Speed	:	< 200ns rise / < 50ns fall, 0 to 25 Watts
Interlock	:	Open OFF, closed ON (Sink 20mA at Vdc)
Temperature Range	:	0° to 50°C, Thermal Shutdown Interlock
Control signals -	:	9 pin 'D' type
Amplitude Control, Digital	:	+sig pn6, -rtn pn7
Amplitude Control, Analog	:	+sig pn8, -rtn pn9
Interlock enable (connect to AO)	:	+sig pn4, -rtn pn5 (closed = on)
Interlock monitor, 15V logic	:	+sig pn1, -rtn pn2 (+15V = OK, 0V = fault)
DC Power Input	:	Filtered screw terminal
Power Supply, Vdc	:	+24V to +28Vdc, 1.0% regulation, < 4A

ALL SPECIFICATIONS SUBJECT TO CHANGE WITHOUT NOTICE

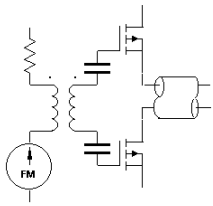
ISOMET CORP, 5263 Port Royal Rd, Springfield, VA 22151, USA.

Tel: (703) 321 8301 Fax: (703) 321 8546

E-mail: ISOMET@ISOMET.COM Web Page: WWW.ISOMET.COM

Quality Assured.

**In-house: RF & Digital design
Software Development
OEM manufacture**



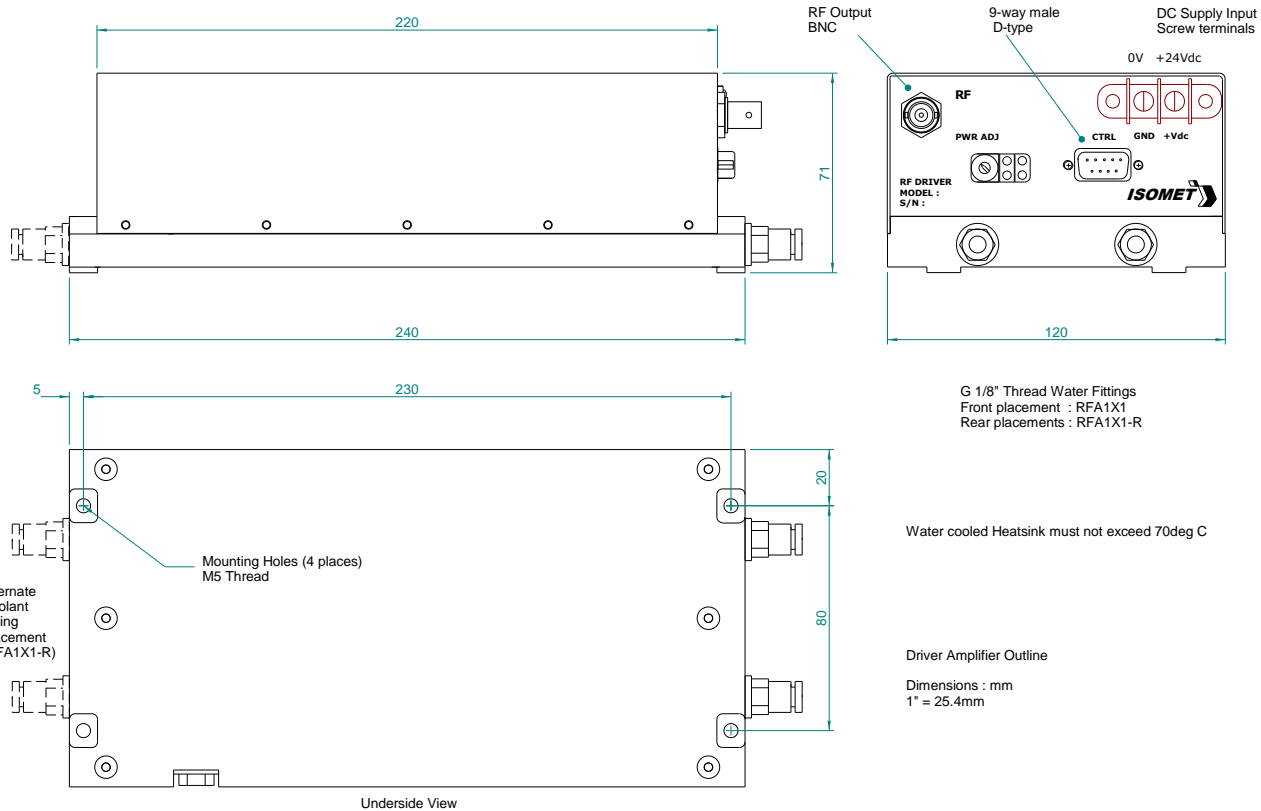
RFA141

RF Driver / Amplifier



1014

OUTLINE DRAWING



OPTIONS

- A : Analog modulation only
- BR: Brass heatsink, rear mounted water fittings only.
(to suit brass or copper cased AO devices)
- R : Rear mounted water fitting
- V : 0 - 5V analog modulation range

ALL SPECIFICATIONS SUBJECT TO CHANGE WITHOUT NOTICE

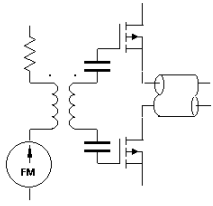
ISOMET CORP, 5263 Port Royal Rd, Springfield, VA 22151, USA.

Tel: (703) 321 8301 Fax: (703) 321 8546

E-mail: ISOMET@ISOMET.COM Web Page: WWW.ISOMET.COM

Quality Assured.

In-house: RF & Digital design
Software Development
OEM manufacture



RFA141

RF Driver / Amplifier



1014

ALL SPECIFICATIONS SUBJECT TO CHANGE WITHOUT NOTICE
ISOMET CORP, 5263 Port Royal Rd, Springfield, VA 22151, USA.
Tel: (703) 321 8301 Fax: (703) 321 8546
E-mail: ISOMET@ISOMET.COM Web Page: WWW.ISOMET.COM

Quality Assured.
In-house: RF & Digital design
Software Development
OEM manufacture