

# RFA0110-4-20

## Quad RF Amplifier



0718

The RFA0110-4-20 contains four independent class-A solid-state RF amplifiers and is designed to operate with *ISOMET* quad-output frequency synthesizers. Each output will deliver in excess of 20 Watts power across a frequency bandwidth of 85 to 135 MHz

Each amplifier channel requires 0dBm (1mW) RF input at the desired output frequency. There is no gain adjustment. The RF power, amplitude modulation and phase are determined by the input source.

The design includes over temperature and high reflected power protection.

### SPECIFICATIONS

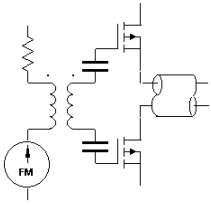
Power Out, each output:	30 Watts minimum CW into 50Ω
Load VSWR:	< 2.5:1 for best results
Output RF power variation vs. freq':	≤ 1 dB over specified bandwidth
Spurious output:	Harmonics > 20dB below fundamental
Bandwidth	85-135MHz minimum
RF input:	3dBm max
Gain:	> 40dB
Input impedance:	50 ohm (nominal)
RF amplitude rise/fall time	< 200/50nsec typical (input dependent)
DC power input:	+24V to 28Vdc* at <14A regulated to ± 0.25%
Temperature range:	0°C to 50°C ambient temperature. Integrated water cooled heatsink. Mounting face must not exceed 70°C.

**Refer application note AN1606 regarding coolant specification**

\* +28Vdc supply will give increased maximum RF power

**ALL SPECIFICATIONS SUBJECT TO CHANGE WITHOUT NOTICE**  
 ISOMET CORP, 10342 Battleview Parkway, Manassas, VA 20109, USA.  
 Tel: (703) 321 8301 Fax: (703) 321 8546  
 E-mail: [ISOMET@ISOMET.COM](mailto:ISOMET@ISOMET.COM) Web Page: [WWW.ISOMET.COM](http://WWW.ISOMET.COM)

**Quality Assured.**  
**In-house: RF & Digital design**  
**Software Development**  
**OEM manufacture**



# RFA0110-4-20

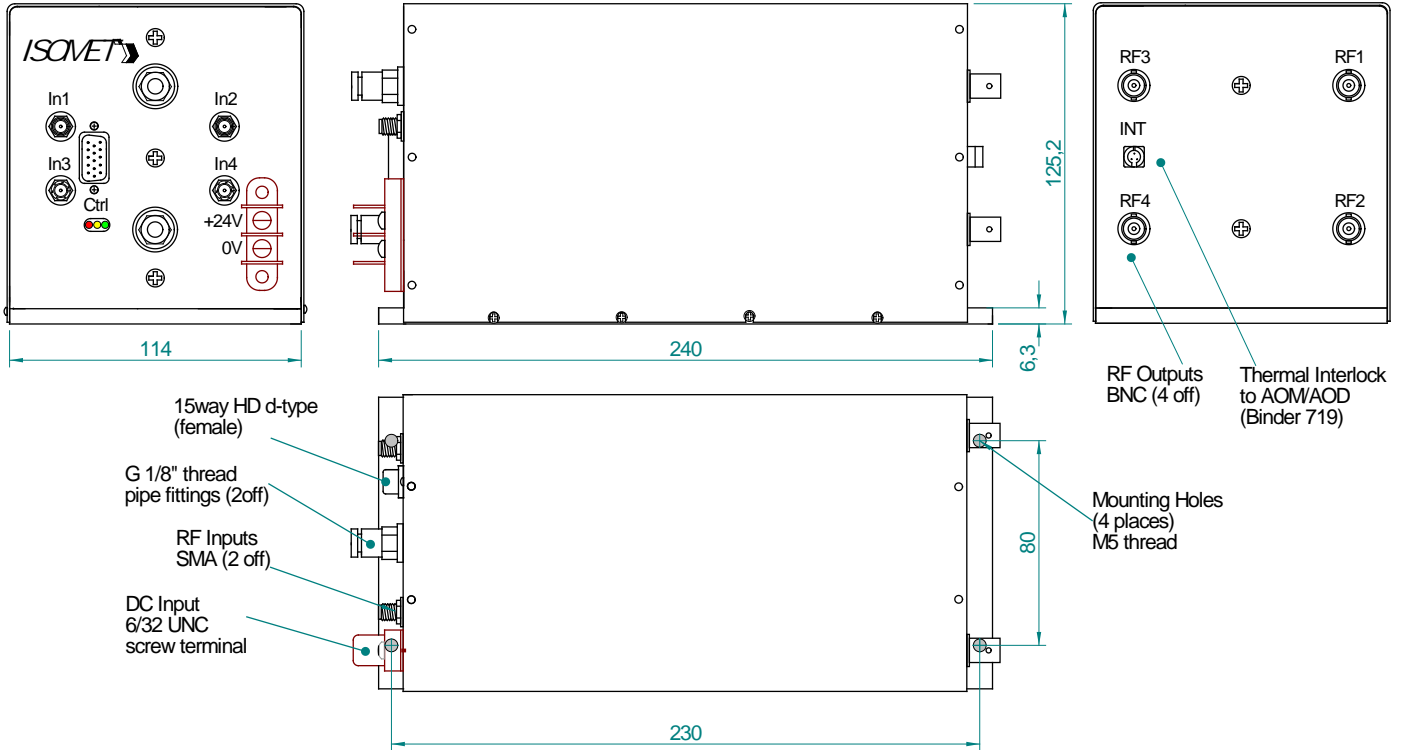
## Quad RF Amplifier



0718

### OUTLINE DRAWING

Dim'n mm



Control signals on 15 pin high density 'D' type (compatible with IMS4-L(P) J5 output) :

pin	signal	pin	signal	pin	signal
1	+5V OUT	6	reserved	11	reserved
2	reserved	7	0V out	12	Interlock Monitor OUT
3	reserved	8	reserved	13	reserved
4	0V OUT	9	Amplifier Enable (-Gate) IN	14	reserved
5	reserved	10	+5V out	15	reserved

DO NOT connect to reserved pins

Options -x, multiple combinations possible:

- BR : Brass water cooled heatsink (water fittings on RF output face)

**ALL SPECIFICATIONS SUBJECT TO CHANGE WITHOUT NOTICE**  
 ISOMET CORP, 10342 Battlevue Parkway, Manassas, VA 20109, USA.  
 Tel: (703) 321 8301 Fax: (703) 321 8546  
 E-mail: [ISOMET@ISOMET.COM](mailto:ISOMET@ISOMET.COM) Web Page: [WWW.ISOMET.COM](http://WWW.ISOMET.COM)

**Quality Assured.**  
 In-house: RF & Digital design  
 Software Development  
 OEM manufacture