



## 800C-x Series RF Amplifier



0818

The 800C-x series are a range of general purpose amplifiers designed to operate with Isomet AO devices. These are ideal for use with the low power frequency sources such as the iMS4-L (-P).

The maximum output level is adjustable and can be pre-set using the multi-turn PWR ADJ potentiometer.

Efficient heat transfer from the driver requires that the mounting base be attached to an external heat sink not exceeding 60°C in temperature.

### SPECIFICATIONS

Input / Output impedance:	50Ω Nominal
Load Mismatch VSWR:	2:1 Max
RF Input Level:	3dBm maximum, 0dBm typical
Harmonics at 1W:	< 25dBc
RF Gain :	> 30dB, adjustable
DC Power Input:	+12 to +15Vdc regulated to ± 1%, < 600mA
Temperature Range:	0°C to 60°C ambient. Temperature at mounting face must not exceed 60°C.
Mounting Orientation:	Any Ensure driver is mounted on a suitable heatsink

### MODELS

Model	3dB Bandwidth	Power option (x)
801C - x	30 - 60MHz	-1
802C - x	60 - 100MHz	-1
803C - x	80 - 130MHz	-1
804C - x	125 - 175MHz	-1
805C - x	150 - 250MHz	-1

Power Option	Maximum RF Power
x = 1	> 1.2W (+15Vdc supply )

#### ALL SPECIFICATIONS SUBJECT TO CHANGE WITHOUT NOTICE

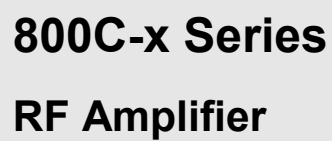
ISOMET CORP, 10342 Battleview Parkway, Manassas, VA 20109, USA.

Tel: (703) 321 8301 Fax: (703) 321 8546

E-mail: [ISOMET@ISOMET.COM](mailto:ISOMET@ISOMET.COM) Web Page: [WWW.ISOMET.COM](http://WWW.ISOMET.COM)

#### Quality Assured.

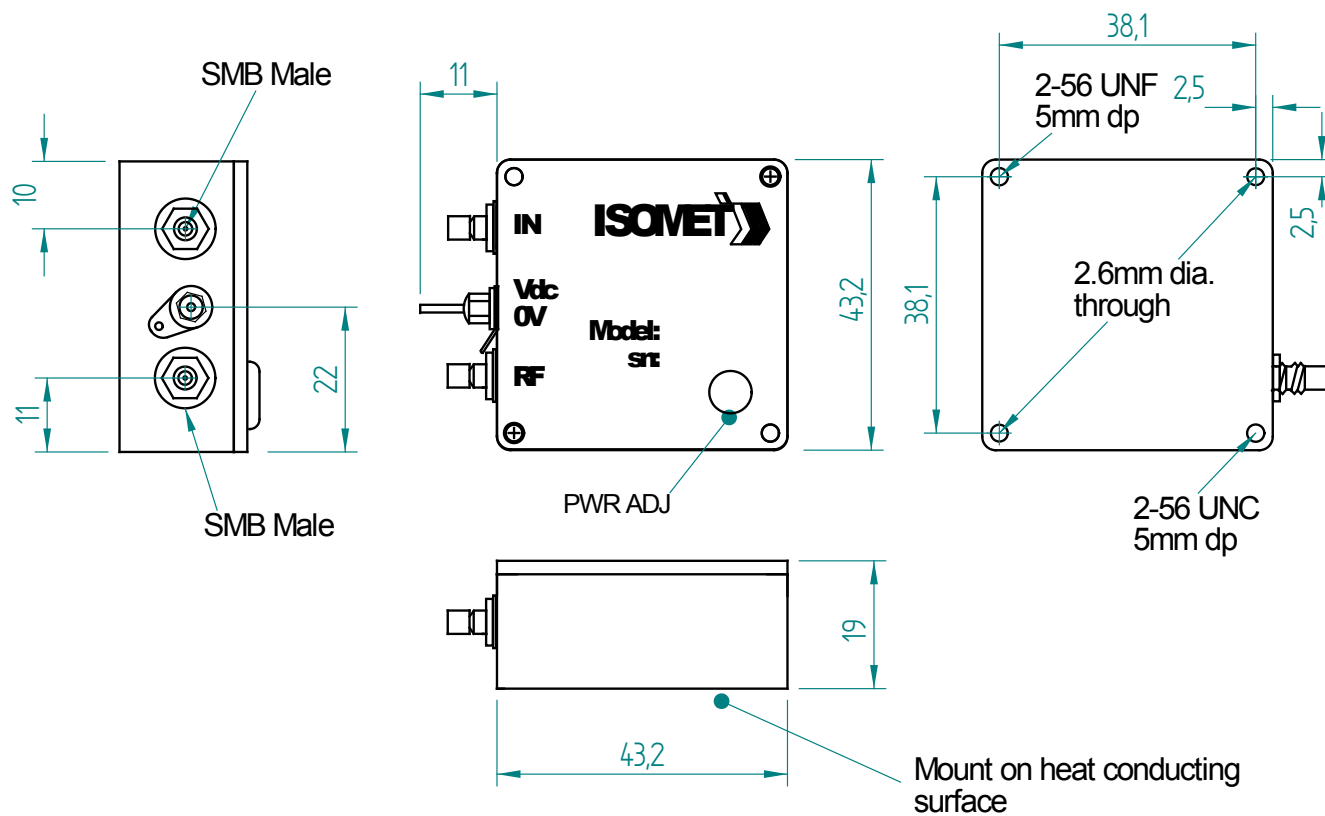
In-house: RF & Digital design  
Software Development  
OEM manufacture



0818

### OUTLINE DRAWING

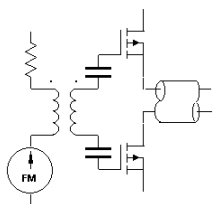
Dimensions: mm



Options ( see page 3):

**ALL SPECIFICATIONS SUBJECT TO CHANGE WITHOUT NOTICE**  
**ISOMET CORP, 10342 Battleview Parkway, Manassas, VA 20109, USA.**  
**Tel: (703) 321 8301      Fax: (703) 321 8546**  
**E-mail: [ISOMET@ISOMET.COM](mailto:ISOMET@ISOMET.COM)      Web Page: [WWW.ISOMET.COM](http://WWW.ISOMET.COM)**

**Quality Assured.**  
**In-house: RF & Digital design**  
**Software Development**  
**OEM manufacture**



## 800C-x Series RF Amplifier



0818

Options:

### Model: 800PC-f/f/f/f, Power Cube

This option is ideal for use with the quad output iMS4-L or -P synthesizers.

Any combination of amplifier bandwidths may be chosen.

Select each of the four frequency bandwidths "f" as listed above for the single amplifier units.

For example: **800PC-2/2/4/4** would comprise two off 802C-1 and two off 804C-1

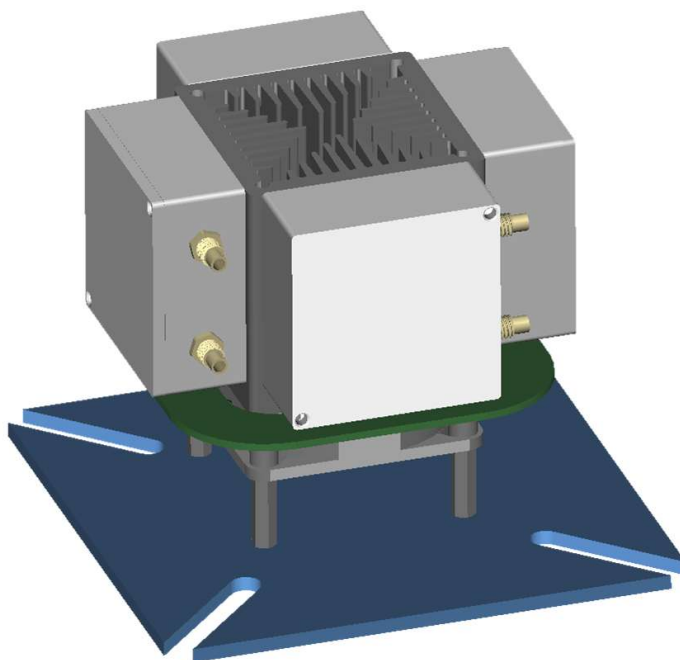
### Outline Specs

Four 800C amplifiers pre-mounted on a fan assisted air-cooled heatsink with common DC input.

Overall Height: ~85mm

Base Dimensions: 110 x 110mm

Mounting slot width: 7mm



#### ALL SPECIFICATIONS SUBJECT TO CHANGE WITHOUT NOTICE

ISOMET CORP, 10342 Battlevue Parkway, Manassas, VA 20109, USA.

Tel: (703) 321 8301 Fax: (703) 321 8546

E-mail: [ISOMET@ISOMET.COM](mailto:ISOMET@ISOMET.COM) Web Page: [WWW.ISOMET.COM](http://WWW.ISOMET.COM)

Quality Assured.

In-house: RF & Digital design  
Software Development  
OEM manufacture