

# 752C-x Series

## RF Driver with dual control



0113

The 752C series Dual Modulation Drivers are compatible with Isomet 80MHz AO Modulators and Q-switches. These RF drivers include a precision crystal oscillator, wideband mixer and RF power amplifier stage. Separate modulation inputs enable simultaneous analog (level) and digital (On:Off) control.

Efficient heat transfer from the driver is required. The mounting base must be attached to an external heat sink. The supply to the 752C-2 driver is internally regulated and thus will accept a wide DC power input range. The DC input is not internally regulated on versions C-L, C-4, C-7.

### SPECIFICATIONS

Output impedance:	50Ω Nominal
Load Mismatch VSWR:	2:1 Max
RF On-Off Ratio:	>40dB
Digital Input:	TTL compatible, (10mA input current) > 2.7V = RF ON, < 0.8V = RF OFF
Analog Input:	0 - 5V * for 100% depth of modulation 600ohm input impedance
On:Off Extinction ratio:	37dB minimum, 40dB typical
Frequency Accuracy:	± 0.003%
Frequency Stability:	± 0.003%
DC Power Input:	
752C-L	+15Vdc regulated to ± 1%, < 400mA
752C-2	+20V to +28Vdc regulated to ± 1%, < 500mA
752C-4	+24/+28Vdc regulated to ± 1%, < 500mA
752C-7	+24/+28Vdc regulated to ± 1%, < 600mA
Temperature Range:	0°C to 40°C ambient
Mounting Orientation:	Any
Dimensions:	See Outline, reverse side.

### PERFORMANCE

Model	Centre Frequency	Minimum Rise Time	RF Drive Power	Supply
752C-L	80MHz	6nsec	>1.3 W	+15V
752C-2	80MHz	6nsec	>2.0 W	+24V typical
752C-4	80MHz	6nsec	>3.5 / 4.0 W	+24 / 28V
752C-7	80MHz	6nsec	>7.0 W	+28V

#### ALL SPECIFICATIONS SUBJECT TO CHANGE WITHOUT NOTICE

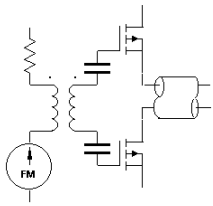
ISOMET CORP, 5263 Port Royal Rd, Springfield, VA 22151, USA.

Tel: (703) 321 8301 Fax: (703) 321 8546

E-mail: [ISOMET@ISOMET.COM](mailto:ISOMET@ISOMET.COM) Web Page: [WWW.ISOMET.COM](http://WWW.ISOMET.COM)

Quality Assured.

In-house: RF & Digital design  
Software Development  
OEM manufacture



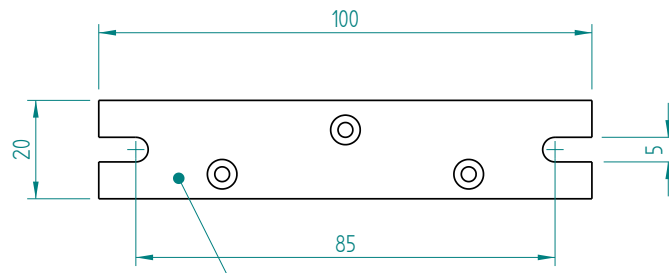
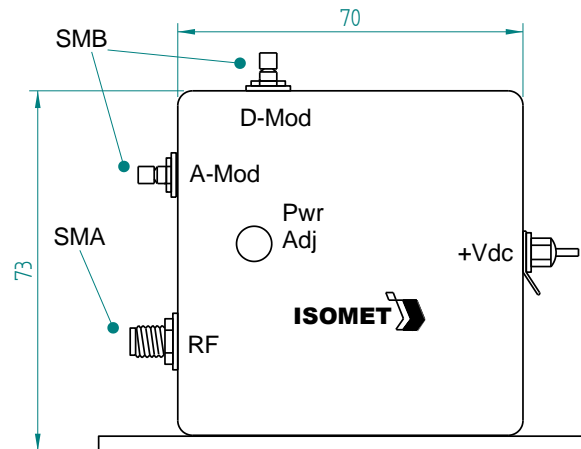
# 752C-x Series

## RF Driver with dual control



0113

### OUTLINE DRAWING



Mounting Flange to Heatsink  
Apply Thermal Compound  
Max. Temp 70deg C

Dim'n : mm

* Options	Add Suffix
Input BIAS :	'-B '
0-10V modulation :	'-X '

**ALL SPECIFICATIONS SUBJECT TO CHANGE WITHOUT NOTICE**  
 ISOMET CORP, 5263 Port Royal Rd, Springfield, VA 22151, USA.  
 Tel: (703) 321 8301 Fax: (703) 321 8546  
 E-mail: [ISOMET@ISOMET.COM](mailto:ISOMET@ISOMET.COM) Web Page: [WWW.ISOMET.COM](http://WWW.ISOMET.COM)

**Quality Assured.**  
 In-house: RF & Digital design  
 Software Development  
 OEM manufacture