

535C-x RF Driver



1106

The 535C series RF Drivers are designed to operate with Isomet 200MHz high speed AO modulators for the proportional (analog) control of laser beam intensity.

Contained in these Drivers are a SAW resonator, a wideband mixer, and a RF Power amplifier. Under control of the video input signal, the mixer impresses the modulating video on the carrier amplitude. The resulting double sideband AM signal is subsequently amplified by a Class A MOSFET amplifier stage.

Efficient heat transfer from the driver requires that the mounting base be attached to an external heat sink not exceeding 60°C in temperature. The supply to the 535C-2 driver is internally regulated and thus will accept a wide DC power input range. The DC input is not internally regulated on C-L variant.

SPECIFICATIONS

Output impedance:	50Ω Nominal
Load Mismatch VSWR:	2:1 Max
RF On-Off Ratio:	>40dB
Analogue Input:	0 - 1V for 100% depth of modulation 50 ohm input impedance
Frequency Accuracy:	± 0.003%
Frequency Stability:	± 0.003%
DC Power Input: 535C-L	+9Vdc regulated to ± 1%, < 250mA
535C-2	+22 to +30Vdc regulated to ± 1%, < 500mA
Temperature Range:	0°C to 60°C ambient, temperature at mounting face must not exceed 70°C.
Mounting Orientation:	Any
Dimensions:	See Outline, reverse side.

PERFORMANCE

Model	Centre Frequency	Minimum Rise Time	RF Drive Power	Supply
535C-L	200MHz	3nsec	>0.45 W	+9V
535C-2	200MHz	3nsec	>2.0 W	+22 to +30V

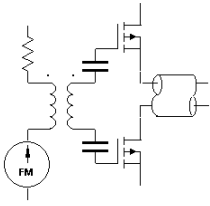
ALL SPECIFICATIONS SUBJECT TO CHANGE WITHOUT NOTICE

ISOMET CORP, 5263 Port Royal Rd, Springfield, VA 22151, USA.

Tel: (703) 321 8301 Fax: (703) 321 8546

E-mail: ISOMET@ISOMET.COM Web Page: WWW.ISOMET.COM

Quality Assured.
In-house: RF & Digital design
Software Development
OEM manufacture

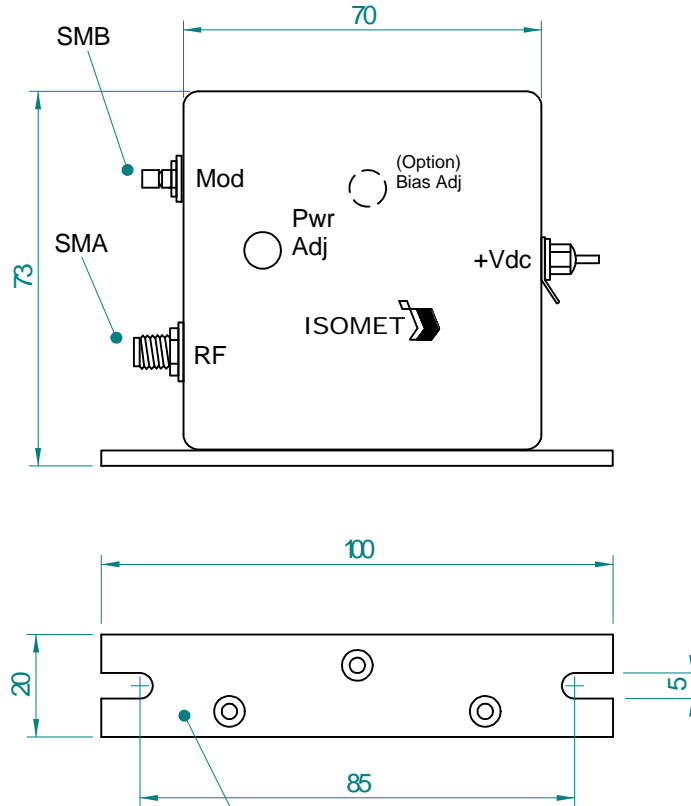


535C-x RF Driver



1106

OUTLINE DRAWING



Mounting Flange to Heatsink
Apply Thermal Compound
Max. Temp 70deg C

Dim'n : mm

* Options

Add Suffix

Input BIAS	:	'-B'
0-5V modulation	:	'-V'
0-10V modulation	:	'-X'

(TTL compatible = 525C series)

ALL SPECIFICATIONS SUBJECT TO CHANGE WITHOUT NOTICE

ISOMET CORP, 5263 Port Royal Rd, Springfield, VA 22151, USA.

Tel: (703) 321 8301 Fax: (703) 321 8546

E-mail: ISOMET@ISOMET.COM Web Page: WWW.ISOMET.COM

Quality Assured.
In-house: RF & Digital design
Software Development
OEM manufacture