

# 524C-x Series

## RF Driver



1106

The 524C series Digital Modulation Drivers are designed to operate with Isomet 150MHz AO modulators and frequency shifters for digital (On:Off) control of the laser beam intensity.

Contained in these Drivers is a crystal oscillator, a wideband balanced diode ring modulator, and RF power amplifier. A high speed, balanced ring modulator is used to switch the carrier amplitude under the control of the modulation input. The resulting double sideband AM signal is subsequently amplified by a Class A MOSFET amplifier stage.

Efficient heat transfer from the driver is required. The mounting base must be attached to an external heat sink not exceeding a temperature of 70°C. The supply to the 524C-2 driver is internally regulated and thus will accept a wide DC power input range. The DC input is not internally regulated on C-L and C-3 variant.

### SPECIFICATIONS

Output impedance:	50Ω Nominal
Load Mismatch VSWR:	2:1 Max
RF On-Off Ratio:	>40dB
Digital Input:	TTL compatible > 2.7V = RF ON, < 0.8V = RF OFF (10mA input current)
Frequency Accuracy:	± 0.003%
Frequency Stability:	± 0.003%
DC Power Input: 524C-L	+15Vdc regulated to ± 1%, < 400mA
524C-2	+22 to +30Vdc regulated to ± 1%, < 500mA
524C-3	+24/+28Vdc regulated to ± 1%, < 550mA
Temperature Range:	0°C to 60°C ambient, temperature at mounting face must not exceed 70°C.
Mounting Orientation:	Any
Dimensions:	See Outline, reverse side.

### PERFORMANCE

<u>Model</u>	<u>Centre Frequency</u>	<u>Minimum Rise Time</u>	<u>RF Drive Power</u>	<u>Supply</u>
524C-L	150MHz	6nsec	>1.5 W	+15V
524C-2	150MHz	6nsec	>2.4 W	+22 to +30V
524C-3	150MHz	6nsec	>3.0 W	+24V
524C-3	150MHz	6nsec	>3.3 W	+28V

#### ALL SPECIFICATIONS SUBJECT TO CHANGE WITHOUT NOTICE

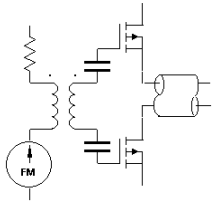
ISOMET CORP, 5263 Port Royal Rd, Springfield, VA 22151, USA.

Tel: (703) 321 8301 Fax: (703) 321 8546

E-mail: [ISOMET@ISOMET.COM](mailto:ISOMET@ISOMET.COM) Web Page: [WWW.ISOMET.COM](http://WWW.ISOMET.COM)

Quality Assured.

In-house: RF & Digital design  
Software Development  
OEM manufacture

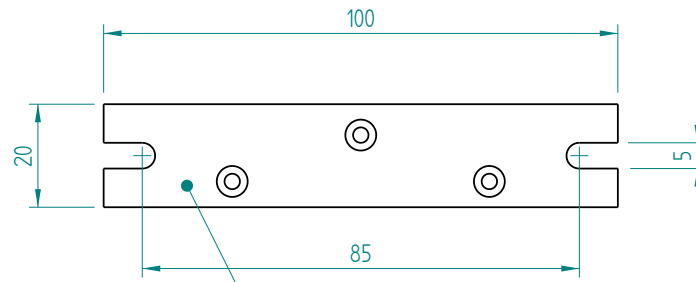
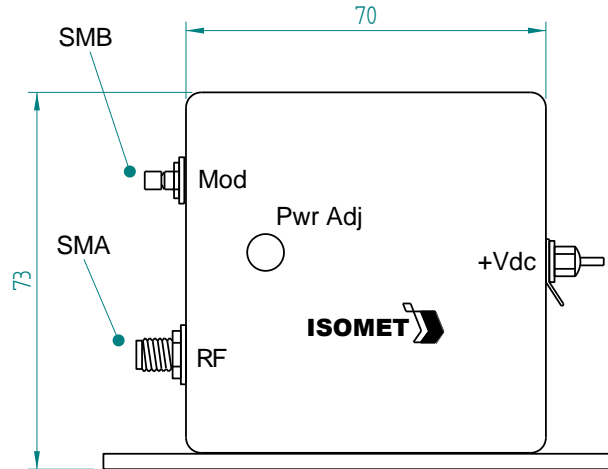


# 524C-x Series RF Driver



1106

## OUTLINE DRAWING



Mounting Flange to Heatsink  
Apply Thermal Compound  
Max. Temp 70deg C

Dim'n : mm

\* Options

Add Suffix

(Analog control = 534C series)

**ALL SPECIFICATIONS SUBJECT TO CHANGE WITHOUT NOTICE**

ISOMET CORP, 5263 Port Royal Rd, Springfield, VA 22151, USA.

Tel: (703) 321 8301 Fax: (703) 321 8546

E-mail: [ISOMET@ISOMET.COM](mailto:ISOMET@ISOMET.COM) Web Page: [WWW.ISOMET.COM](http://WWW.ISOMET.COM)

**Quality Assured.**

**In-house: RF & Digital design**

**Software Development**

**OEM manufacture**