

RFA240-2

RF Driver/Amplifier



1106

The RFA240-2 is a combined 40 MHz oscillator and power amplifier suitable for driving Isomet High Power Acousto-optic modulators such as Model AOM600-1108. This driver features digital and analog inputs for the control of the RF amplitude. Protection includes an internal over temperature sensor, and a 'TranZorb' over voltage diode on the DC supply input. An external interlock (or RF enable) input is provided.

The RFA240-2 will operate from a +24V to +28Vdc supply. An LED indicates when the RF outputs are 'live'. The maximum RF output power can be adjusted by means of a pre-set potentiometer.

The amplifier includes an integral water-cooled heatsink.

SPECIFICATION

Power Output (total)	:	> 130 Watts Max CW (28V supply) > 110 Watts Max. CW (24V supply)
Load Impedance	:	50Ω
Harmonic Distortion	:	>20dB below fundamental
Mismatch Tolerance	:	The Driver will not oscillate
Center Frequency	:	40 MHz
Frequency stability	:	± 0.003%
Frequency accuracy	:	± 0.005%
Modulation Control Voltage	:	
Digital	:	TTL compatible (> 2.7V, RF O/P=OFF)
Analog	:	0.0 to 10.0V, 1kohm i/p impedance (nominal)
RF ON to OFF Ratio	:	40dB below full power
Output Switching Speed	:	< 0.25μs Rise/Fall, 0 to 50 Watts
Interlock	:	Open OFF, closed ON Sink 20mA at 12V
Power Supply	:	+24V to +28Vdc, 0.25% regulation, < 10A
Temperature Range	:	0° to 60°C, Thermal Shutdown Interlock
RF Output	:	BNC (2 off)
Control signals -	:	15 pin 'D' type Male
Amplitude Control, Digital	:	+sig pn8, -rtn pn15
Amplitude Control, Analog	:	+sig pn7, -rtn pn14
Interlock enable (connect to AO)	:	+sig pn1, -rtn pn9 (closed = on)
Interlock monitor, CMOS open drain	:	+sig pn2, -rtn pn10 (low = OK)
Power Input	:	Feed through filter solder tag
Dimensions	:	(See reverse)

ALL SPECIFICATIONS SUBJECT TO CHANGE WITHOUT NOTICE

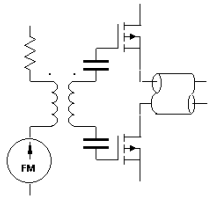
ISOMET CORP, 5263 Port Royal Rd, Springfield, VA 22151, USA.

Tel: (703) 321 8301 Fax: (703) 321 8546

E-mail: ISOMET@ISOMET.COM Web Page: WWW.ISOMET.COM

Quality Assured.

In-house: RF & Digital design
Software Development
OEM manufacture



RFA240-2

RF Driver/Amplifier

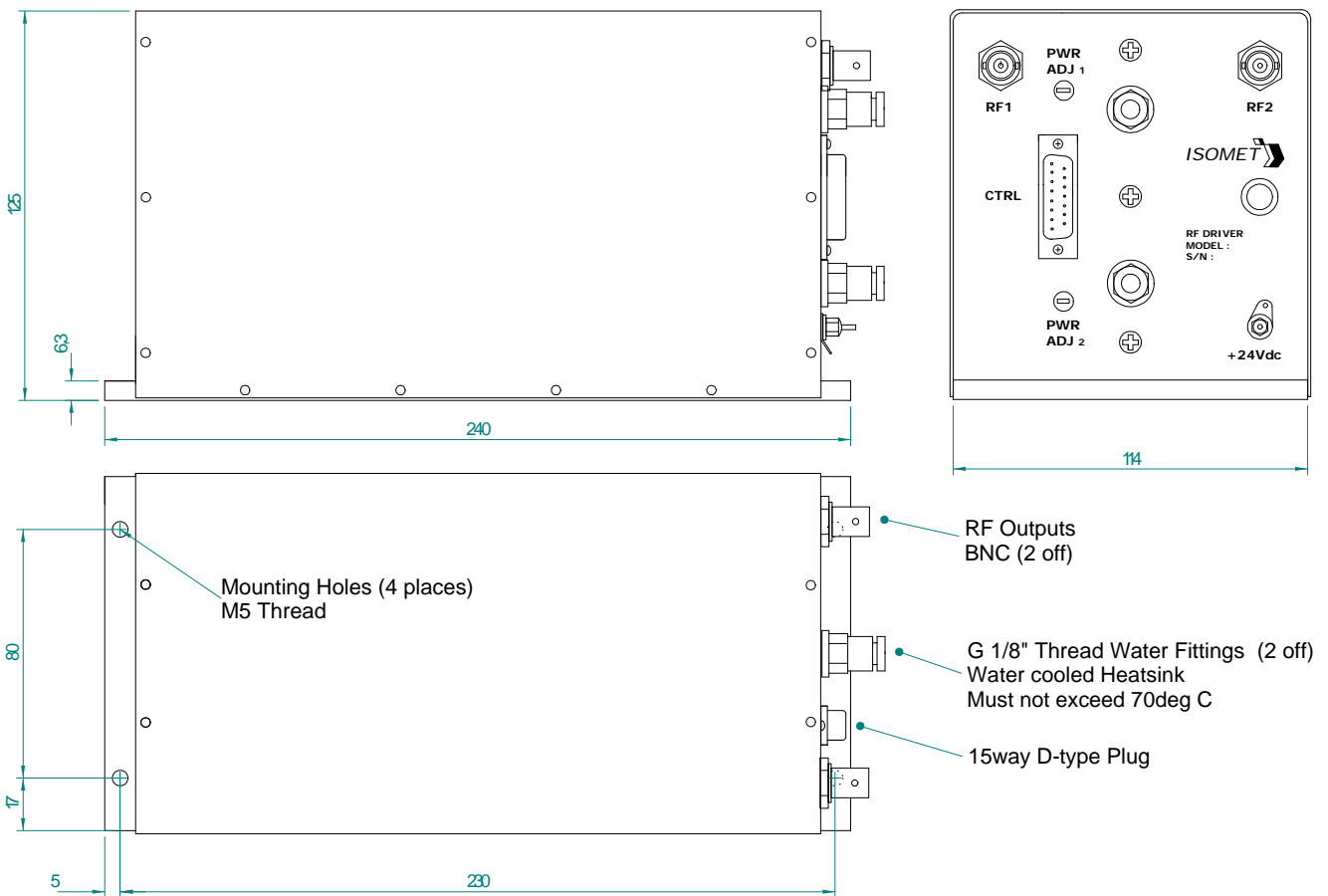


1106

OUTLINE DRAWING (RFA240-2 / RFA250-2 Series)

RFA250-2 Series RF Amplifier Outline

Dimensions : mm
1" = 25.4mm



ALL SPECIFICATIONS SUBJECT TO CHANGE WITHOUT NOTICE
 ISOMET CORP, 5263 Port Royal Rd, Springfield, VA 22151, USA.
 Tel: (703) 321 8301 Fax: (703) 321 8546
 E-mail: ISOMET@ISOMET.COM Web Page: WWW.ISOMET.COM

Quality Assured.
In-house: RF & Digital design
Software Development
OEM manufacture