

# RFA118

## RF Amplifier



902

### SPECIFICATIONS

Type:	Linear, Class A
Bandwidth:	30 MHz to 150 MHz
Gain:	12dB $\pm$ 1dB
Max. Power Output:	18 Watts CW
Input Impedance:	50 $\Omega$ Nominal
Input VSWR:	$\leq$ 1.5 : 1
Output Impedance:	50 $\Omega$ Nominal
Output VSWR:	$\leq$ 2 : 1
Stability:	Unconditionally Stable
Supply Voltage:	+ 24 Vdc @ 1.9A
Temperature Range:	0° C to 55° C, Case Temperature must not exceed 70° C
Cooling:	Natural convection and conduction through mounting surface

#### Note:

The Model RFA118 is compatible with the 220, 230 and D300 Series drivers, which may be operated at 24 Vdc supply voltage.

#### ALL SPECIFICATIONS SUBJECT TO CHANGE WITHOUT NOTICE

ISOMET CORP, 5263 Port Royal Rd, Springfield, VA 22151, USA.

Tel: (703) 321 8301 Fax: (703) 321 8546

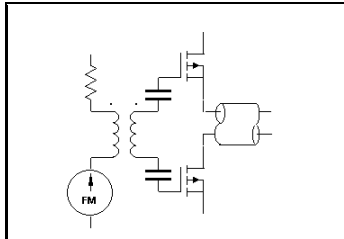
E-mail: [ISOMET@ISOMET.COM](mailto:ISOMET@ISOMET.COM) Web Page: [WWW.ISOMET.COM](http://WWW.ISOMET.COM)

Quality Assured.

In-house: RF & Digital design

Software Development

OEM manufacture



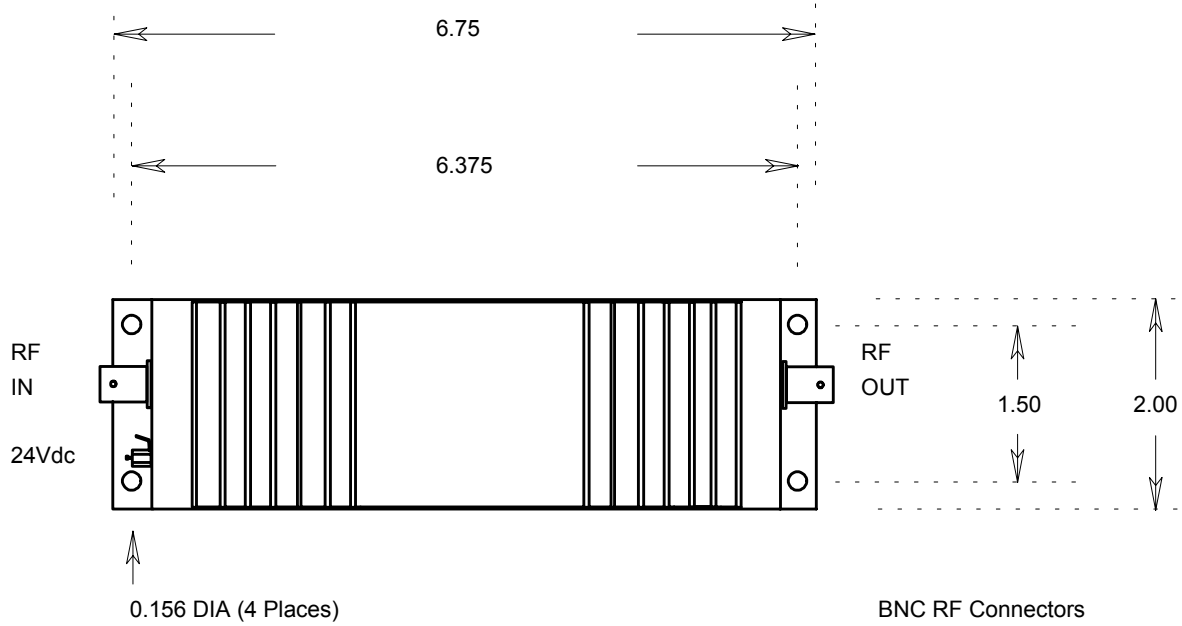
# RFA118

## RF Amplifier

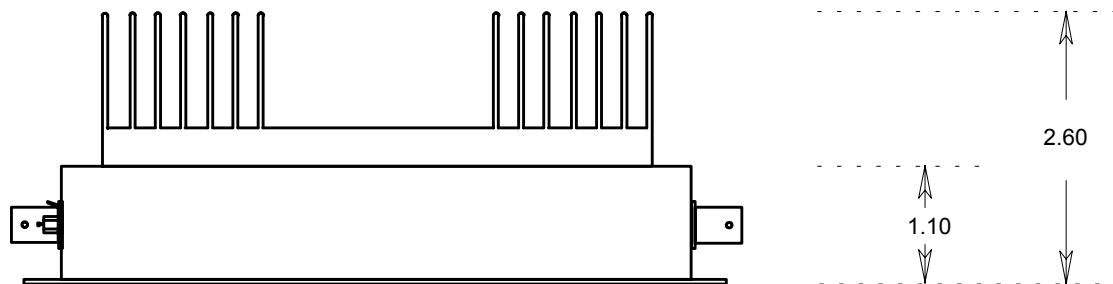


902

### OUTLINE DRAWING



All dimensions are in inches



**ALL SPECIFICATIONS SUBJECT TO CHANGE WITHOUT NOTICE**

ISOMET CORP, 5263 Port Royal Rd, Springfield, VA 22151, USA.

Tel: (703) 321 8301 Fax: (703) 321 8546

E-mail: [ISOMET@ISOMET.COM](mailto:ISOMET@ISOMET.COM) Web Page: [WWW.ISOMET.COM](http://WWW.ISOMET.COM)

**Quality Assured.**

**In-house: RF & Digital design**

**Software Development**

**OEM manufacture**