

RFA1150/4

RF Power Amplifier



1002

The Model RFA1150/4 amplifier is a class A solid-state unit designed to drive the Model LS600 Germanium Acousto-Optic Scanner manufactured by Isomet with up to 200Watts of power in the 50-90 MHz frequency band. The amplifier has one RF input and four 50 Watt outputs. Internal delays give the four outputs the proper phasing to beam steer the LS600. The amplifier, supplied as a module and requiring +24V regulated power supply for operation, exhibits a nominal gain of 50dB/output.

Specifications :

Power out :	50 Watts CW into 50 Ω per output
Frequency response :	50 - 90 MHz
Flatness:	+/- 1dB
Gain Input to Each Output:	50dB nominal
Input impedance:	50 Ω Nominal
Output impedance :	50 Ω Nominal
Input VSWR:	< 2.0:1
Harmonic Distortion :	> 20 dB below fundamental at 40W output > 14 dB below fundamental at 50W output
Power Supply Requirement :	24A at +24V (7A fuse per channel)
Power Consumption:	576W Nominal
Mismatch Tolerance:	Amplifier will not oscillate with any condition of load or source VSWR
Case Temperature :	Maximum Allowable 46° C Minimum Allowable 0° C
Water Cooling :	Maintain water flow at > 1liter/min at <25° C

ALL SPECIFICATIONS SUBJECT TO CHANGE WITHOUT NOTICE

ISOMET CORP, 5263 Port Royal Rd, Springfield, VA 22151, USA.

Tel: (703) 321 8301 Fax: (703) 321 8546

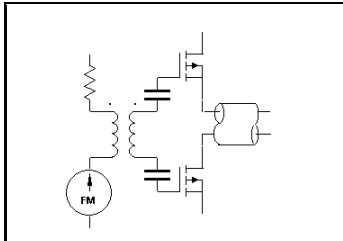
E-mail: ISOMET@ISOMET.COM Web Page: WWW.ISOMET.COM

Quality Assured.

In-house: RF & Digital design

Software Development

OEM manufacture



RFA1150/4

RF Power Amplifier



1002

OUTLINE DRAWING

ALL SPECIFICATIONS SUBJECT TO CHANGE WITHOUT NOTICE

ISOMET CORP, 5263 Port Royal Rd, Springfield, VA 22151, USA.

Tel: (703) 321 8301 Fax: (703) 321 8546

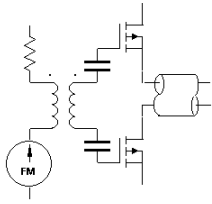
E-mail: ISOMET@ISOMET.COM Web Page: WWW.ISOMET.COM

Quality Assured.

In-house: RF & Digital design

Software Development

OEM manufacture

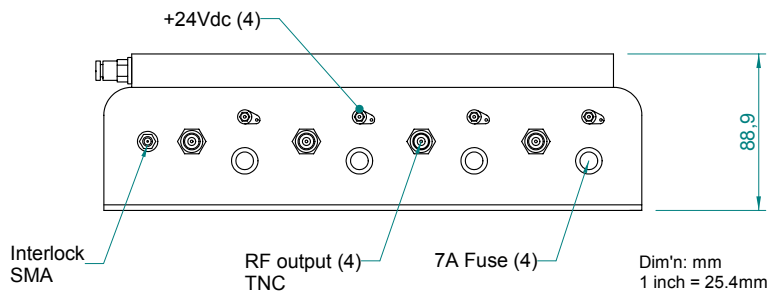
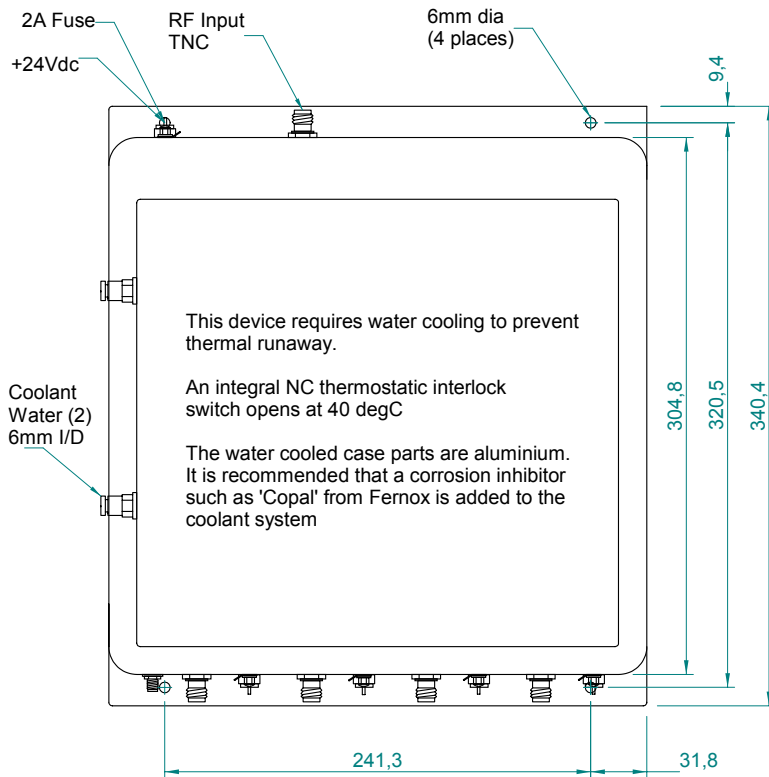


RFA1150/4

RF Power Amplifier



1002



ALL SPECIFICATIONS SUBJECT TO CHANGE WITHOUT NOTICE

ISOMET CORP, 5263 Port Royal Rd, Springfield, VA 22151, USA.

Tel: (703) 321 8301 Fax: (703) 321 8546

E-mail: ISOMET@ISOMET.COM Web Page: WWW.ISOMET.COM

Quality Assured.

In-house: RF & Digital design

Software Development

OEM manufacture