

RFA-108 or RFA-1108

RF POWER AMPLIFIERS



804

SPECIFICATIONS

TYPE:	Linear, Class A	
Bandwidth:	10MHz to 150MHz	
	<u>RFA-108</u>	<u>RFA-1108</u>
Gain:	10dB +/- 1dB	40dB +/- 1dB
Power Output:	8 Watts CW	
Input Impedance:	50 Ohms Nominal	
Input VSWR:	<1.5:1	
Output Impedance:	50 Ohms Nominal	
Output VSWR:	<2:1	
Stability:	Unconditionally Stable	
Supply Voltage:	+24VDC @ 1.3A	
Temperature Range:	0°C to 55°C, Case Temperature must not exceed 70°C	
Cooling:	Natural convection and conduction through mounting surface	
Dimensions:	5.75"L x 3"W x 3.25"H including heat radiating fins	
Outline:	(see reverse)	

ALL SPECIFICATIONS SUBJECT TO CHANGE WITHOUT NOTICE

ISOMET CORP, 5263 Port Royal Rd, Springfield, VA 22151, USA.

Tel: (703) 321 8301 Fax: (703) 321 8546

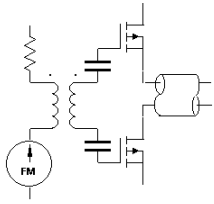
E-mail: ISOMET@ISOMET.COM Web Page: WWW.ISOMET.COM

Quality Assured.

In-house: RF & Digital design

Software Development

OEM manufacture



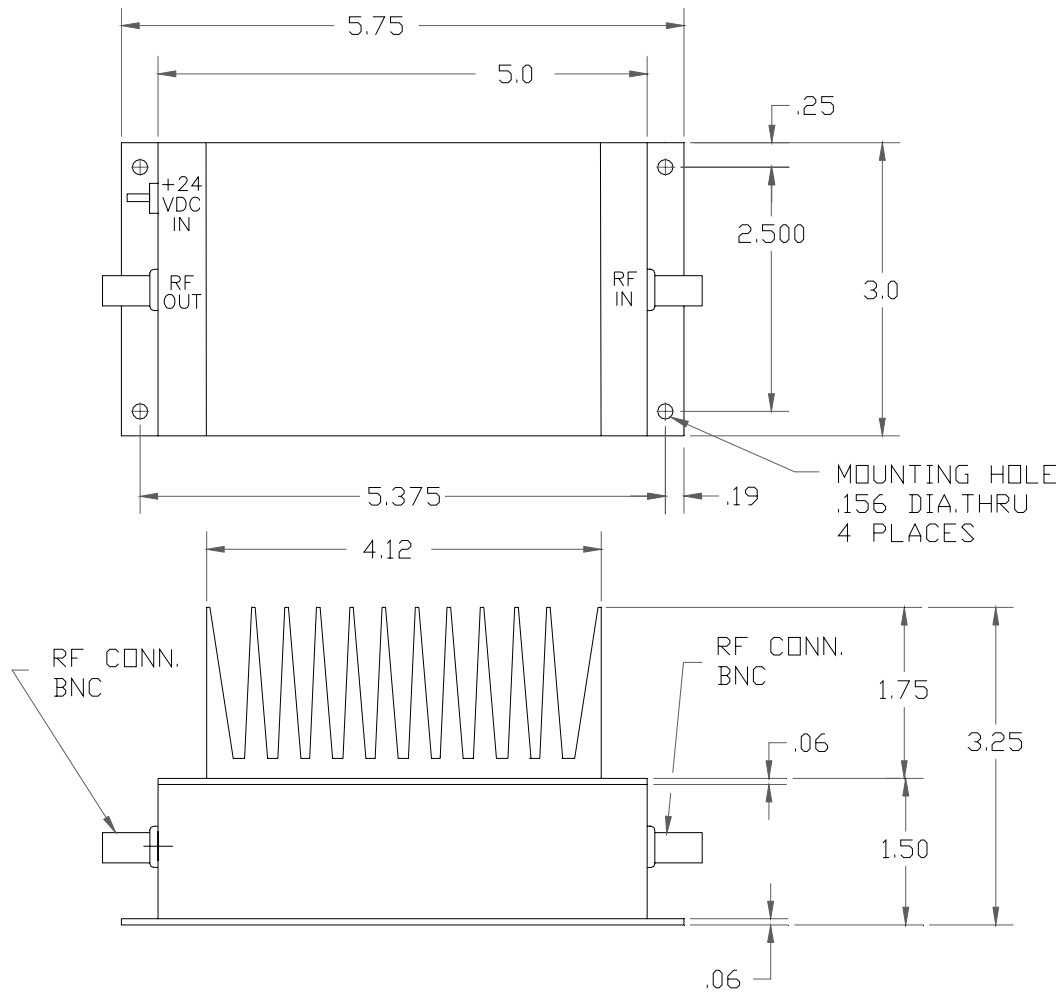
RFA-108 or RFA-1108

RF POWER AMPLIFIERS



804

OUTLINE DRAWING



ALL DIMENSIONS ARE IN INCHES UNLESS OTHERWISE SPECIFIED

ALL SPECIFICATIONS SUBJECT TO CHANGE WITHOUT NOTICE

ISOMET CORP, 5263 Port Royal Rd, Springfield, VA 22151, USA.

Tel: (703) 321 8301 Fax: (703) 321 8546

E-mail: ISOMET@ISOMET.COM Web Page: WWW.ISOMET.COM

Quality Assured.

In-house: RF & Digital design

Software Development

OEM manufacture