

RFA105 (-4)

RF Amplifier



902

SPECIFICATIONS

Type:	Linear, Class A
Bandwidth:	30 MHz to 250 MHz
Gain:	9dB minimum
Gain flatness	± 1dB
Power Output	RFA105: 7 Watts CW RFA105-4: 4 Watts CW
Input Impedance:	50Ω Nominal
Input VSWR:	≤ 1.5 : 1
Output Impedance:	50Ω Nominal
Output VSWR:	≤ 2 : 1
Stability:	Unconditionally Stable
Supply Voltage:	+ 24 VDC @ 1.0A
Temperature Range:	0° C to 55° C, Case Temperature must not exceed 70° C
Cooling:	Natural convection and conduction through mounting surface

Note: The Model RFA105 is compatible with the 200 and D300 Series drivers, which may also be operated at 24 VDC supply voltage.

ALL SPECIFICATIONS SUBJECT TO CHANGE WITHOUT NOTICE

ISOMET CORP, 5263 Port Royal Rd, Springfield, VA 22151, USA.

Tel: (703) 321 8301 Fax: (703) 321 8546

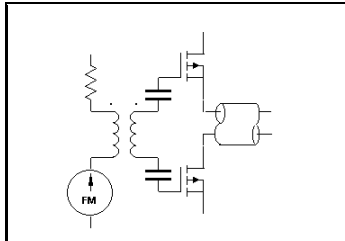
E-mail: ISOMET@ISOMET.COM Web Page: WWW.ISOMET.COM

Quality Assured.

In-house: RF & Digital design

Software Development

OEM manufacture

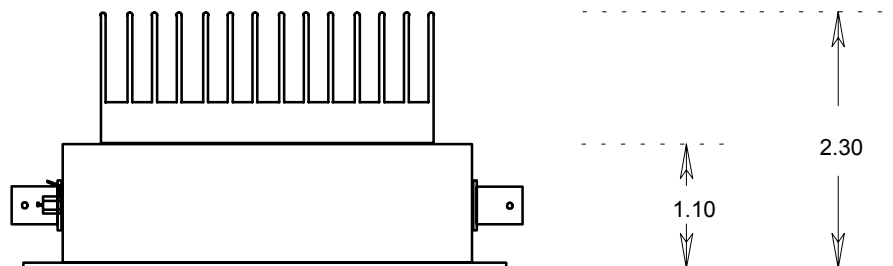
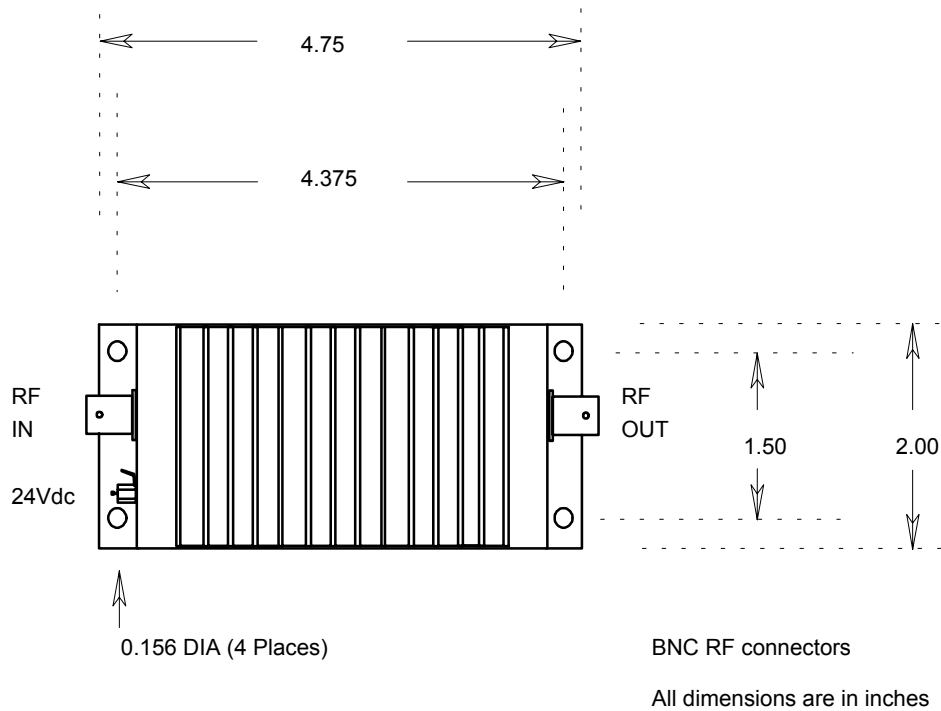


RFA105 (-4) RF Amplifier



902

OUTLINE DRAWING



ALL SPECIFICATIONS SUBJECT TO CHANGE WITHOUT NOTICE

ISOMET CORP, 5263 Port Royal Rd, Springfield, VA 22151, USA.

Tel: (703) 321 8301 Fax: (703) 321 8546

E-mail: ISOMET@ISOMET.COM Web Page: WWW.ISOMET.COM

Quality Assured.

In-house: RF & Digital design

Software Development

OEM manufacture