

# IA100 Series

## Pre-Amplifier

(With modulation)



902

The IA100 is a preamplifier and modulation module designed to interface the VCO 200A Voltage Controlled Oscillator with various Isomet fixed gain RF amplifiers\*. When used in conjunction with these amplifiers, the IA-100 provides a convenient means of adjusting RF output power levels for diffraction efficiency optimisation of the respective acousto-optic scanner.

A video input port is provided to allow the application of a +TTL or Analog modulation signal to control the output amplitude. This may be applied for RF blanking during line scan retrace, or between spot positions in random access applications. For convenience, the IA100 is offered in three versions:

<u>MODEL</u>	<u>MODULATION INPUT SIGNAL</u>
IA100-1	+ TTL Gates RF Off
IA100-2	+ TTL Gates RF On
IA100-3	Voltage Controlled RF Output Level

All models are interchangeable. The selection of model will depend on which modulation input mode is most desirable in the overall system configuration.

### SPECIFICATIONS

RF Input/Output Impedance:	50Ω Nominal
RF Input Level:	-3dBm (Maximum)
RF Frequency Range:	30 MHz to 150 MHz
Gain:	Null Gain to +8 dB (Adjustable)
Modulation (Video) Input:	Digital, +TTL (+5Vdc Maximum)
DC Power Input:	+ 15 VDC @ 150mA
Temperature Range :	0°C to 5°C Ambient
Mounting Orientation:	Any
Dimensions:	See Outline (Reverse Side)

\*Typical Acousto-Optic Scanner/Drive Electronics Configurations:

<u>Deflector</u>	<u>Drive Electronics</u>
LS600	VCO-200A, IA-100, RFA-1150/4
LS50-XY	2 <b><u>EACH</u></b> OF VCO-200A, IA-100, RFA-1150/4

#### ALL SPECIFICATIONS SUBJECT TO CHANGE WITHOUT NOTICE

ISOMET CORP, 5263 Port Royal Rd, Springfield, VA 22151, USA.

Tel: (703) 321 8301 Fax: (703) 321 8546

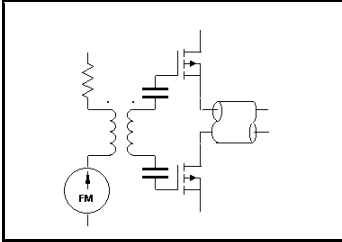
E-mail: [ISOMET@ISOMET.COM](mailto:ISOMET@ISOMET.COM) Web Page: [WWW.ISOMET.COM](http://WWW.ISOMET.COM)

Quality Assured.

In-house: RF & Digital design

Software Development

OEM manufacture



# IA100 Series

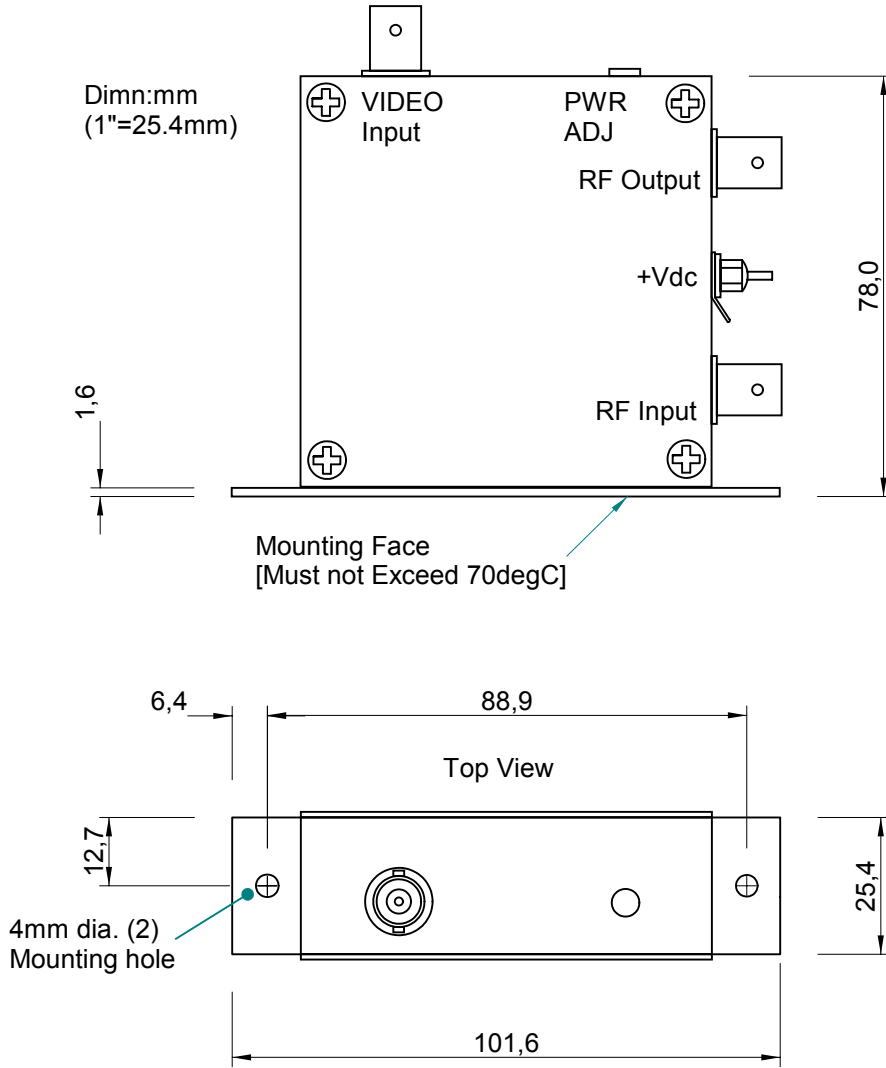
## Pre-Amplifier

(With modulation)



902

### OUTLINE DRAWING



**ALL SPECIFICATIONS SUBJECT TO CHANGE WITHOUT NOTICE**

ISOMET CORP, 5263 Port Royal Rd, Springfield, VA 22151, USA.

Tel: (703) 321 8301 Fax: (703) 321 8546

E-mail: [ISOMET@ISOMET.COM](mailto:ISOMET@ISOMET.COM) Web Page: [WWW.ISOMET.COM](http://WWW.ISOMET.COM)

**Quality Assured.**

**In-house: RF & Digital design**

**Software Development**

**OEM manufacture**