

# FS1-D

## Synthesizer Source & RF Driver



902

The FS1-D Synthesizer Driver is a modular, programmable RF power source specifically designed to operate with Isomet acousto-optic tunable filters such as the AOTF614 and AOLF615. The driver accepts a serial data input and provides an RF output at a user defined frequency and power. Windows 98 Software is supplied, which interfaces via the parallel printer port of a PC and allows full control of the Frequency and Gain (RF Power). In addition the driver can 'store' up to four 'frequency-gain' profiles. These four values can be selected rapidly in any order via 'Profile select' inputs.

Two FS1 drivers can be connected in 'daisy chain' fashion to a single parallel port, ideal for XY deflector and differential frequency shifting applications.

Output frequency range:	15 – 115 MHz (full range)
Frequency resolution (full range):	32 Bit, or < 0.03Hz
Frequency selection time (point to point)	<100nsec via external profile pins < 2msec in program mode
Frequency stability:	+/- 0.004%
Maximum Output Power:	1W
Output power flatness:	< +/- 1dB
Harmonics:	< 35dBc
Power adjustment range:	> 10dB via pre-set Multi-turn potentiometer > 30dB range via 'Gain' setting in Software
Amplitude modulation resolution:	> 40dBc
Mechanical package:	See over

### Interface

Output:	Signal:	RF, 50ohm
	Connector:	SMA
Inputs:	Logic signals:	TTL compatible HCMOS
	DC power	24V at < 0.8A
	Connectors:	25way male D-type (to PC parallel port) 15way male D-type (DC input and optional control signals)

**ALL SPECIFICATIONS SUBJECT TO CHANGE WITHOUT NOTICE**

ISOMET CORP, 5263 Port Royal Rd, Springfield, VA 22151, USA.

Tel: (703) 321 8301 Fax: (703) 321 8546

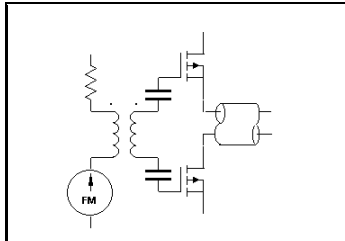
E-mail: [ISOMET@ISOMET.COM](mailto:ISOMET@ISOMET.COM) Web Page: [WWW.ISOMET.COM](http://WWW.ISOMET.COM)

**Quality Assured.**

**In-house: RF & Digital design**

**Software Development**

**OEM manufacture**



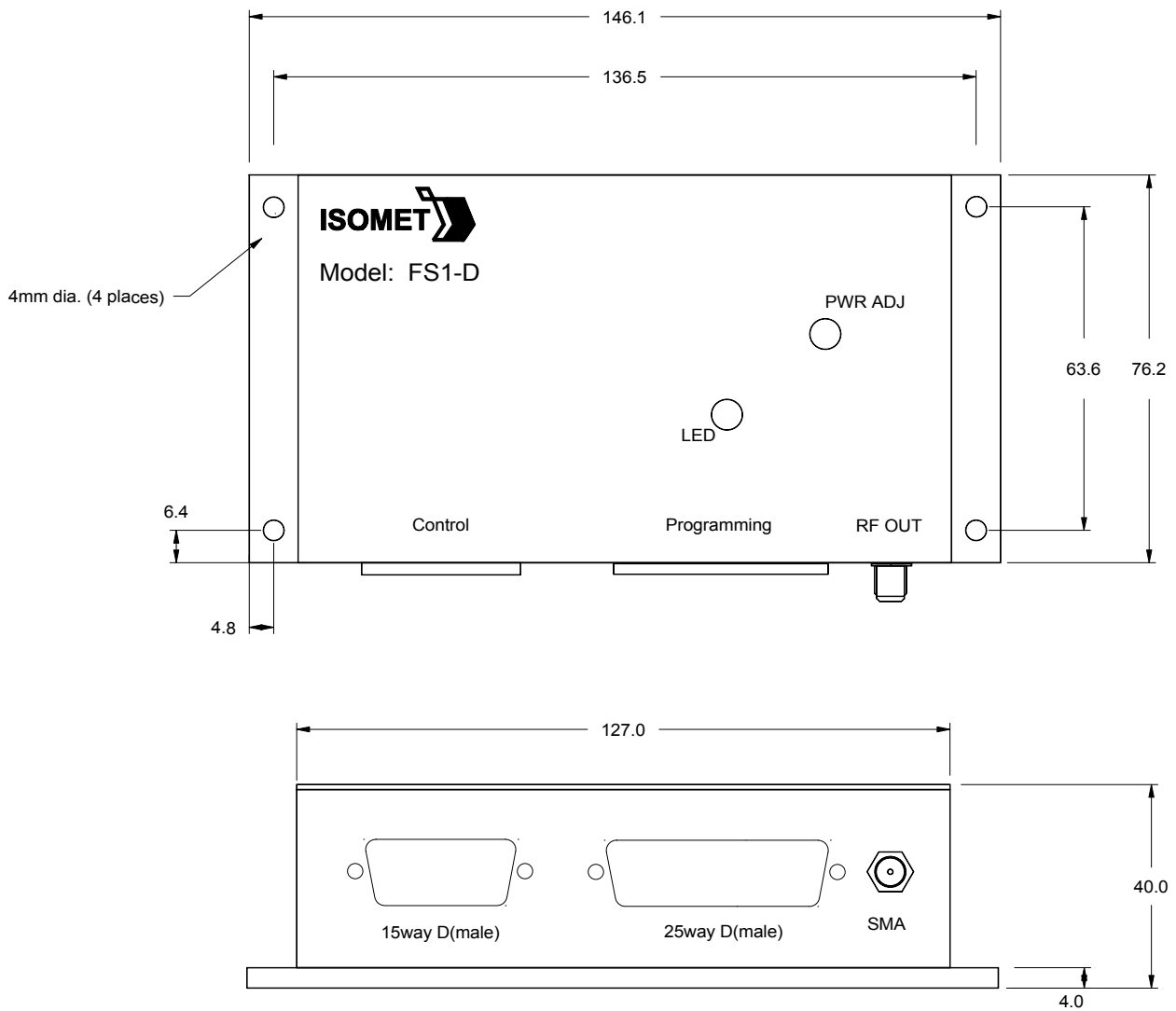
# FS1-D

## Synthesizer Source & RF Driver



902

### OUTLINE DRAWING



Heats ink mounting surface  
Mounting surface temperature must not exceed 40degC

Dimensions: mm

**ALL SPECIFICATIONS SUBJECT TO CHANGE WITHOUT NOTICE**

ISOMET CORP, 5263 Port Royal Rd, Springfield, VA 22151, USA.

Tel: (703) 321 8301 Fax: (703) 321 8546

E-mail: [ISOMET@ISOMET.COM](mailto:ISOMET@ISOMET.COM) Web Page: [WWW.ISOMET.COM](http://WWW.ISOMET.COM)

**Quality Assured.**

**In-house: RF & Digital design**

**Software Development**

**OEM manufacture**