

D325/D335

Tunable RF Driver



902

The D325 Modulator/Deflector Driver, is a modular, swept-frequency RF power source specifically designed to operate with Isomet acousto-optic deflectors such as the 1250C and OPP834. The driver accepts a tuning voltage between approximately +0 volts and +10 volts and provides an RF output to the acousto-optic deflector at the tuned frequency. The driver also accepts a video input signal to control the amplitude of the RF output. The start frequency corresponding to a tuning voltage of 0.0 volts is defined by the frequency offset potentiometer (FRQ OS). This permits adjustment of the start frequency from approx 145-160MHz. An internal 1/256 divider provides a TTL output signal at 1/256 of the tuned operating frequency. This can be used for monitoring or feedback purposes.

SPECIFICATIONS

Oscillator Type:	Varactor-tuned thin film hybrid
Amplifier Type:	Broadband Class A
Output RF Power:	≥ 1.0 Watt
Output Impedance:	50Ω nominal
Load VSWR:	< 2.5:1 for best results
Frequency monitor output (FMON):	TTL compatible @ 1/256 of output frequency
RF Power Variation vs. Freq:	≤ 1 dB
Spurious Outputs:	Harmonics > 20dB below fundamental
Tuning Range:	145 to 300 MHz Maximum 150 to 250 MHz Specified
Tuning Voltage (Vt):	0 to 10V for specified tuning range
Tuning Linearity:	<1.5% over specified tuning range
Tuning Voltage Impedance:	10Kohm (nominal)
Tuning Slew Rate	> 7 MHz/μs
Residual FM:	< 10 KHz peak-to-peak
Frequency Stability:	±0.25%
Video Input Voltage (MOD):	
(D335) Analog option:	0-1V for 100% depth of modulation, DC coupled
(D325) Digital option:	TTL line driver, positive logic
Input Impedance:	50Ω source
RF On-Off Ratio:	> 40 dB
DC Power Input:	+24Vdc or +28Vdc at 700 mA regulated to ± 0.25%
Temperature Range:	0°C to 60°C ambient, temperature at mounting face must not exceed 70°C
Mounting Orientation:	Any

ALL SPECIFICATIONS SUBJECT TO CHANGE WITHOUT NOTICE

ISOMET CORP, 5263 Port Royal Rd, Springfield, VA 22151, USA.

Tel: (703) 321 8301 Fax: (703) 321 8546

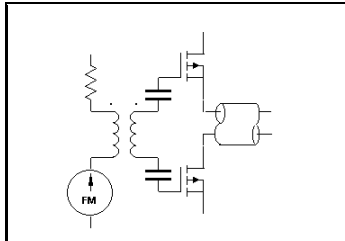
E-mail: ISOMET@ISOMET.COM Web Page: WWW.ISOMET.COM

Quality Assured.

In-house: RF & Digital design

Software Development

OEM manufacture

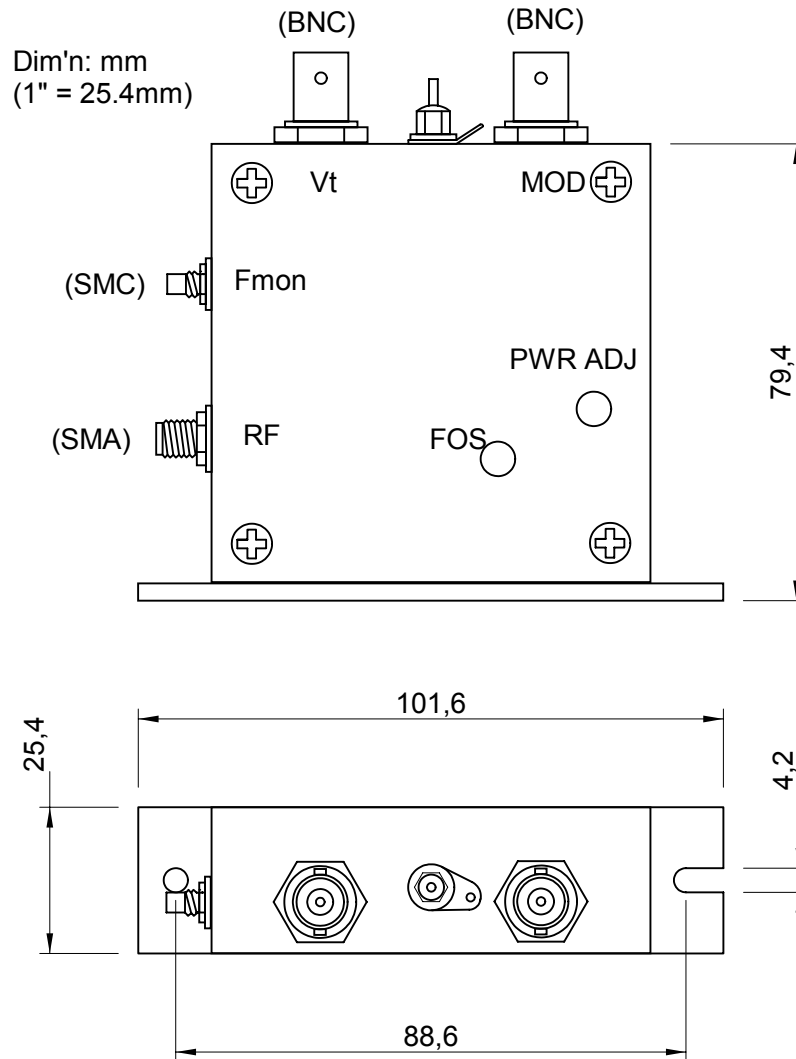


D325/D335 Tunable RF Driver



902

OUTLINE DRAWING



ALL SPECIFICATIONS SUBJECT TO CHANGE WITHOUT NOTICE

ISOMET CORP, 5263 Port Royal Rd, Springfield, VA 22151, USA.

Tel: (703) 321 8301 Fax: (703) 321 8546

E-mail: ISOMET@ISOMET.COM Web Page: WWW.ISOMET.COM

Quality Assured.

In-house: RF & Digital design

Software Development

OEM manufacture