

AQS1060-FC-x

RF Driver/Amplifier with Soft-Start



1106

The AQS1060 is a combined waveform generator, RF oscillator, and 60W power amplifier in a single compact unit.

This driver features Isomet's "Soft-Start" RF amplitude control and is well suited to driving acousto-optic Q-switches such as the Isomet Q1083 series. The Soft-Start technique applies a mix of digital and analog modulation signals to control the RF amplitude. Almost any envelope or ramp shape can be programmed. The output timing and pulse widths are determined by an internal PLL waveform generator or by user supplied external signal(s).

Driver protection includes; High output load VSWR shutdown, opto-isolated digital inputs, internal over temperature interlock, and DC supply over-voltage clamp diode. An external interlock (for connection to the AO device thermal switch) and RF output enable inputs are also provided.

The AQS1060 will operate from a +24V to +28Vdc supply. Output status bits are supplemented by LED's, indicating the operating condition of the driver and associated Q-switch. The maximum RF output power is adjusted by means of a pre-set potentiometer.

Model Selection:

	<u>Freq</u>		<u>Option</u>	
AQS1060	-	FC	-	X
24.0MHz		24		A Air cooled
27.12MHz		27		W Water cooled
40.68MHz		40		

SPECIFICATION

Power Output	:	> 60 Watts Max CW (28V supply) > 50 Watts Max CW (24V supply)
Load Impedance	:	50Ω
Harmonic Distortion	:	>20dB below fundamental
Mismatch Tolerance	:	The Driver will not oscillate
Centre Frequency fc	:	As requested
Frequency stability	:	± 0.003%
Frequency accuracy	:	± 0.005%
Modulation Control Voltages		
Digital	:	Opto-isolated 15mA max.
Analog	:	0.0 to 4.0V, 300ohm i/p impedance (nominal)
RF On/off Ratio	:	40dB below full power
Output Switching Speed	:	< 0.25µs Rise/ < 0.1µs Fall, 0 to 50 Watts
Interlock (Input)	:	Open OFF, closed ON
Power Supply	:	+24V to +28Vdc, 0.5% regulation, < 6A
Temperature Range	:	0° to 60°C, Thermal Shutdown Interlock

ALL SPECIFICATIONS SUBJECT TO CHANGE WITHOUT NOTICE

ISOMET CORP, 5263 Port Royal Rd, Springfield, VA 22151, USA.

Tel: (703) 321 8301 Fax: (703) 321 8546

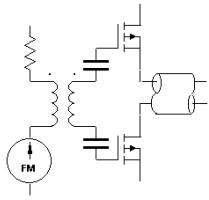
E-mail: ISOMET@ISOMET.COM Web Page: WWW.ISOMET.COM

Quality Assured.

In-house: RF & Digital design

Software Development

OEM manufacture



AQS1060-FC-x

RF Driver/Amplifier with Soft-Start



1106

Connections

RF Output : BNC

Control signals : 25 pin 'D' type Female

Pin	Signal	Pin	Signal
1	Slope/Modulation Start	14	Analog Modulation Input
2	Internal/External Rep Rate Select	15	Analog Voltage Output
3	External Rep Rate Input	16	Isolated 0V input, (opto supply)
4	Internal/External Dig'l Mod'n Select	17	Gnd
5	Digital Modulation Input	18	Isolated 0V input, (opto supply)
6	Isolated +5Vdc input, (opto supply)*	19	Gnd
7	+5Vdc output *	20	Isolated 0V input, (opto supply)
8	AOQ Thermal Interlock Input 2	21	Isolated 0V input, (opto supply)
9	AOQ Thermal Interlock Input 1	22	Isolated 0V input, (opto supply)
10	Status Bit 1	23	Analog Control Enable
11	Status Bit 2	24	Reset
12	Status Bit 3	25	RF Enable
13	Status Bit 4		

* The Isolated 5Vdc supply input can be linked to the Internal 5Vdc rail and at the connector

User Controls

<u>Function</u>	<u>Adjustment</u>	<u>Specification</u>
Rep Rate	8-bit via 2 Hex Rotary Switches plus Range Select Switch	1 – 120KHz
Pulse Width	8-bit via 2 Hex Rotary Switches	1 – 16.5 usec
RF On/Off RF CW/Modulated Rep-Range Select (2) Slope-Range Select Osc Select	DIL 6-way Lever Switch	Select Function
Waveform Shape	1 of 16 via Hex Rotary Switch	EPROM stored
Shape Period	24 turn potentiometer plus Range Select Switch	18usec – 13.7msec
RF Power	24 turn potentiometer	< 25% - 100%

ALL SPECIFICATIONS SUBJECT TO CHANGE WITHOUT NOTICE

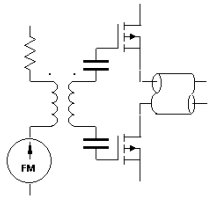
ISOMET CORP, 5263 Port Royal Rd, Springfield, VA 22151, USA.

Tel: (703) 321 8301 Fax: (703) 321 8546

E-mail: ISOMET@ISOMET.COM Web Page: WWW.ISOMET.COM

Quality Assured.

In-house: RF & Digital design
Software Development
OEM manufacture



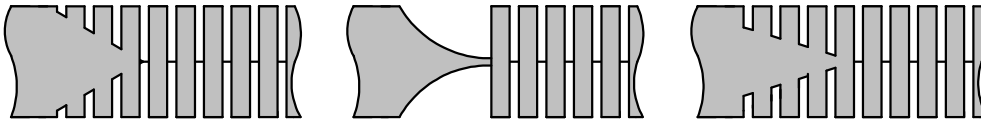
AQS1060-FC-x

RF Driver/Amplifier with Soft-Start

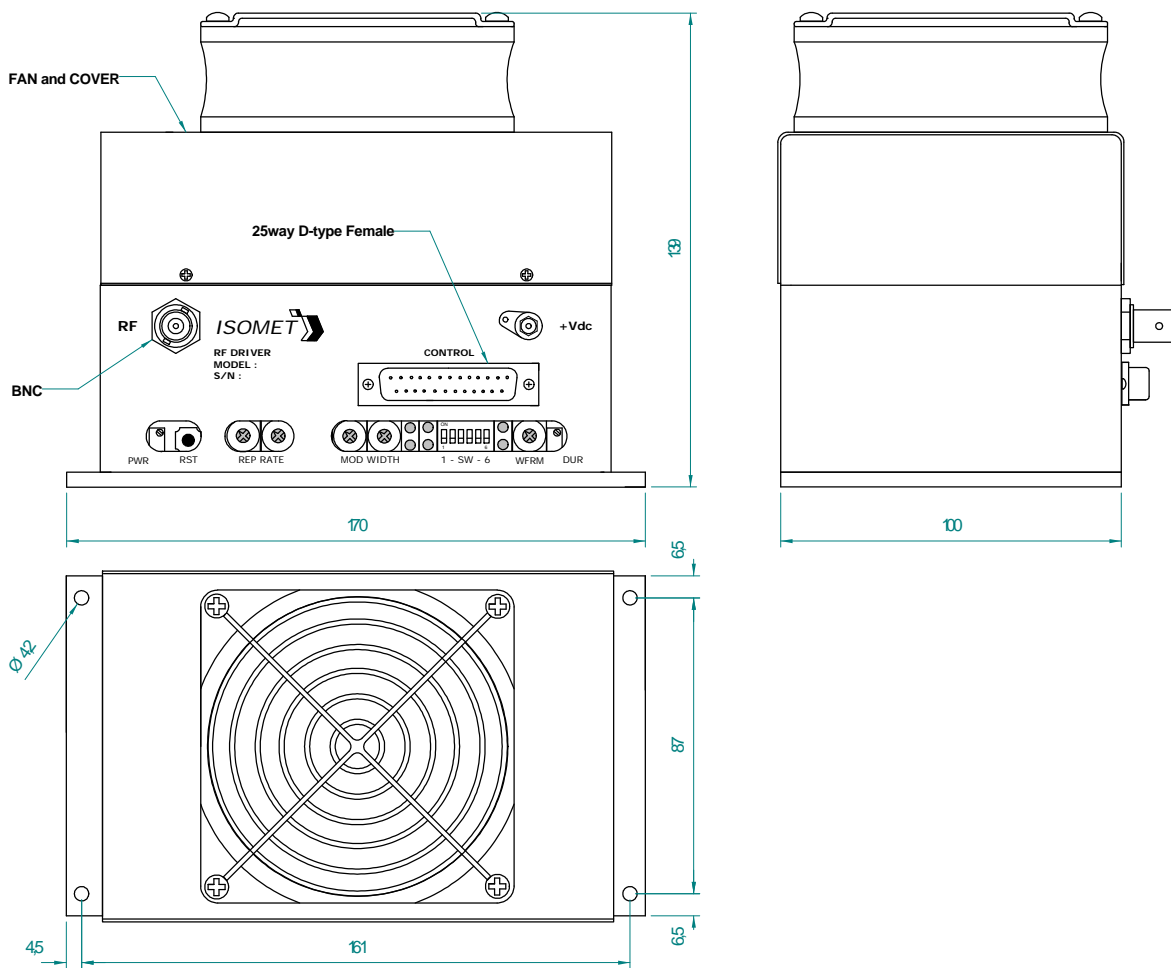


1106

Typical Output RF Envelopes



Outline Drawing



Dimensions : mm

ALL SPECIFICATIONS SUBJECT TO CHANGE WITHOUT NOTICE
 ISOMET CORP, 5263 Port Royal Rd, Springfield, VA 22151, USA.
 Tel: (703) 321 8301 Fax: (703) 321 8546
 E-mail: ISOMET@ISOMET.COM Web Page: WWW.ISOMET.COM

Quality Assured.
 In-house: RF & Digital design
 Software Development
 OEM manufacture