

535C-175 Series

RF Driver



The 535C-175 RF Driver is designed to operate with Isomet 175MHz AO modulators and frequency shifters. This driver allows proportional (analog) control of laser beam intensity.

Contained in these Drivers are a SAW resonator, a wideband mixer, and a RF Power amplifier. Under control of the video input signal, the mixer impresses the modulating video on the carrier amplitude. The resulting double sideband AM signal is subsequently amplified by the Class A MOSFET amplifier.

Efficient heat transfer from the driver requires that the mounting base be attached to an external heat sink not exceeding 60°C in temperature.

SPECIFICATIONS

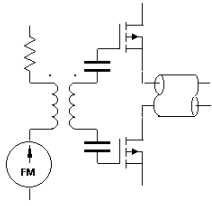
Output impedance:	50Ω Nominal
Load Mismatch VSWR:	2:1 Max
RF On-Off Ratio:	>40dB
Analogue Input:	0 - 1V for 100% depth of modulation 50 ohm input impedance
Frequency Accuracy:	± 0.003%
Frequency Stability:	± 0.003%
DC Power Input:	+24Vdc regulated to ± 1% < 500mA
Temperature Range:	0°C to 60°C ambient, temperature at mounting face must not exceed 60°C.
Mounting Orientation:	Any
Dimensions:	See Outline, reverse side.

PERFORMANCE

<u>Centre Frequency</u>	<u>Minimum Rise Time</u>	<u>RF Drive Power</u>
175MHz	3nsec	>2.5 W

ALL SPECIFICATIONS SUBJECT TO CHANGE WITHOUT NOTICE
 ISOMET CORP, 5263 Port Royal Rd, Springfield, VA 22151, USA.
 Tel: (703) 321 8301 Fax: (703) 321 8546
 E-mail: ISOMET@ISOMET.COM Web Page: WWW.ISOMET.COM

Quality Assured.
In-house: RF & Digital design
Software Development
OEM manufacture

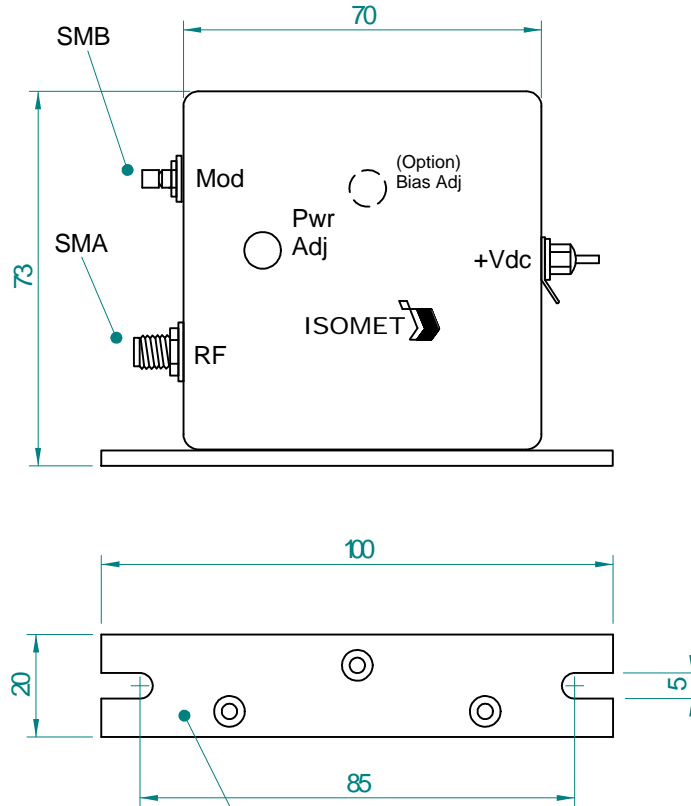


535C-175 Series RF Driver



206

OUTLINE DRAWING



Mounting Flange to Heatsink
Apply Thermal Compound
Max. Temp 70deg C

Dim'n : mm

<u>* Options</u>		<u>Add Suffix</u>
Input BIAS	:	'-B'
0-5V modulation	:	'-V'
0-10V modulation	:	'-X'

(TTL compatible = 525C-175 series)

ALL SPECIFICATIONS SUBJECT TO CHANGE WITHOUT NOTICE

ISOMET CORP, 5263 Port Royal Rd, Springfield, VA 22151, USA.

Tel: (703) 321 8301 Fax: (703) 321 8546

E-mail: ISOMET@ISOMET.COM Web Page: WWW.ISOMET.COM

Quality Assured.
In-house: RF & Digital design
Software Development
OEM manufacture