

533C-x Series RF Driver



1106

The 533C series RF Drivers are designed to operate with Isomet 110MHz AO modulators and compact Q-switches for the proportional (analog) control of laser beam intensity.

Contained in these Drivers is a crystal oscillator, a wideband balanced diode ring modulator, and RF power amplifier. A high speed, balanced ring modulator is used to modulate the carrier amplitude under the control of the video input. The resulting double sideband AM signal is subsequently amplified by a Class A MOSFET amplifier stage.

Efficient heat transfer from the driver is required. The mounting base must be attached to an external heat sink not exceeding a temperature of 70°C. The supply to the 533C-2 driver is internally regulated and thus will accept a wide DC power input range. The DC input is not internally regulated on C-L, C-4 and C-6 variants.

SPECIFICATIONS

Output impedance:	50Ω Nominal
Load Mismatch VSWR:	2:1 Max
RF On-Off Ratio:	>40dB
Analogue Input:	0 - 1V * for 100% depth of modulation 50 ohm input impedance
Frequency Accuracy:	± 0.003%
Frequency Stability:	± 0.003%
DC Power Input: 533C-L	+15Vdc regulated to ± 1%, < 400mA
533C-2	+22 to +30Vdc regulated to ± 1%, < 500mA
533C-4	+24/+28Vdc regulated to ± 1%, < 500mA
533C-6	+24/+28Vdc regulated to ± 1%, < 700mA
Temperature Range:	0°C to 60°C ambient, temperature at mounting face must not exceed 70°C.
Mounting Orientation:	Any
Dimensions:	See Outline, reverse side.

PERFORMANCE

Model	Centre Frequency	Minimum Rise Time	RF Drive Power	Supply
533C-L	110MHz	6nsec	>1.5 W	+15V
533C-2	110MHz	6nsec	>2.0 W	+22 to +30V
533C-3	110MHz	6nsec	>2.5 W	+24V
533C-6	110MHz	6nsec	>5.5 W	+28V

ALL SPECIFICATIONS SUBJECT TO CHANGE WITHOUT NOTICE

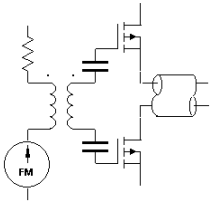
ISOMET CORP, 5263 Port Royal Rd, Springfield, VA 22151, USA.

Tel: (703) 321 8301 Fax: (703) 321 8546

E-mail: ISOMET@ISOMET.COM Web Page: WWW.ISOMET.COM

Quality Assured.

In-house: RF & Digital design
Software Development
OEM manufacture

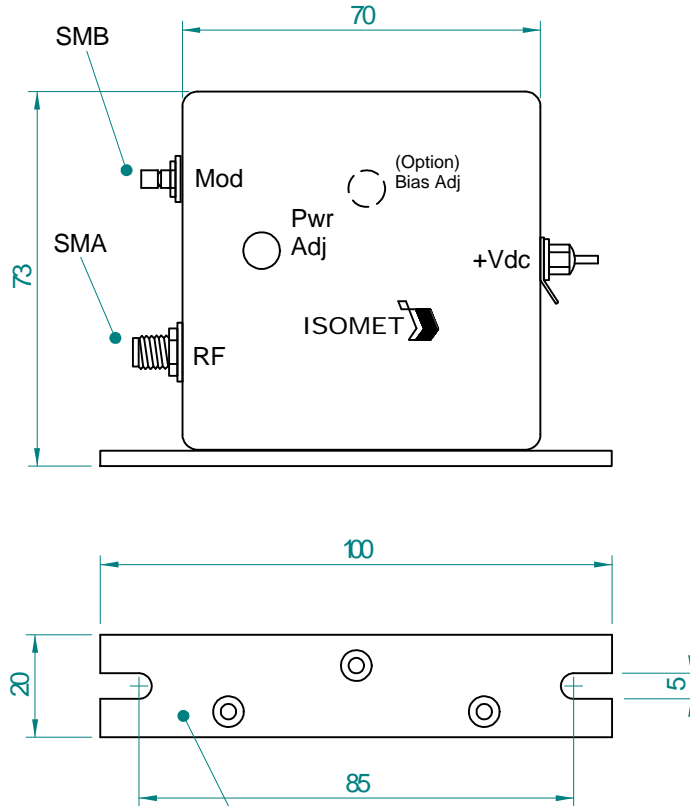


533C-x Series RF Driver



1106

OUTLINE DRAWING



Mounting Flange to Heatsink
Apply Thermal Compound
Max. Temp 70deg C

Dim'n : mm

* Options

Add Suffix

Input BIAS	:	'-B'
0-5V modulation	:	'-V'
0-10V modulation	:	'-X'

(TTL compatible = 523C series)

ALL SPECIFICATIONS SUBJECT TO CHANGE WITHOUT NOTICE

ISOMET CORP, 5263 Port Royal Rd, Springfield, VA 22151, USA.

Tel: (703) 321 8301 Fax: (703) 321 8546

E-mail: ISOMET@ISOMET.COM Web Page: WWW.ISOMET.COM

Quality Assured.
In-house: RF & Digital design
Software Development
OEM manufacture