

532C-x Series

RF Driver



1106

The 532C series RF Drivers are designed to operate with Isomet 80MHz AO modulators and compact Q-switches for the proportional (analog) control of laser beam intensity.

Contained in these Drivers is a crystal oscillator, a wideband balanced diode ring modulator, and RF power amplifier. A high speed, balanced ring modulator is used to modulate the carrier amplitude under the control of the video input. The resulting double sideband AM signal is subsequently amplified by a Class A MOSFET amplifier stage.

Efficient heat transfer from the driver is required. The mounting base must be attached to an external heat sink not exceeding a temperature of 70°C. The supply to the 532C-2 driver is internally regulated and thus will accept a wide DC power input range. The DC input is not internally regulated on C-L, C-4 and C-6 variants.

SPECIFICATIONS

Output impedance:	50Ω Nominal
Load Mismatch VSWR:	2:1 Max
RF On-Off Ratio:	>40dB
Analogue Input:	0 - 1V * for 100% depth of modulation 50 ohm input impedance
Frequency Accuracy:	± 0.003%
Frequency Stability:	± 0.003%
DC Power Input: 532C-L	+15Vdc regulated to ± 1%, < 400mA
532C-2	+22 to +30Vdc regulated to ± 1%, < 500mA
532C-4	+24/+28Vdc regulated to ± 1%, < 500mA
532C-6	+24/+28Vdc regulated to ± 1%, < 700mA
Temperature Range:	0°C to 60°C ambient, temperature at mounting face must not exceed 70°C.
Mounting Orientation:	Any
Dimensions:	See Outline, reverse side.

PERFORMANCE

<u>Model</u>	<u>Centre Frequency</u>	<u>Minimum Rise Time</u>	<u>RF Drive Power</u>	<u>Supply</u>
532C-L	80MHz	6nsec	>1.7 W	+15V
532C-2	80MHz	6nsec	>2.8 W	+22 to +30V
532C-4	80MHz	6nsec	>4.0 W >3.5 W	+28V +24V
532C-6	80MHz	6nsec	>6.0 W	+24V

ALL SPECIFICATIONS SUBJECT TO CHANGE WITHOUT NOTICE

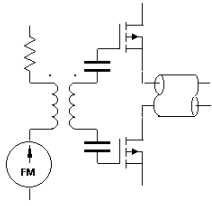
ISOMET CORP, 5263 Port Royal Rd, Springfield, VA 22151, USA.

Tel: (703) 321 8301 Fax: (703) 321 8546

E-mail: ISOMET@ISOMET.COM Web Page: WWW.ISOMET.COM

Quality Assured.

In-house: RF & Digital design
Software Development
OEM manufacture

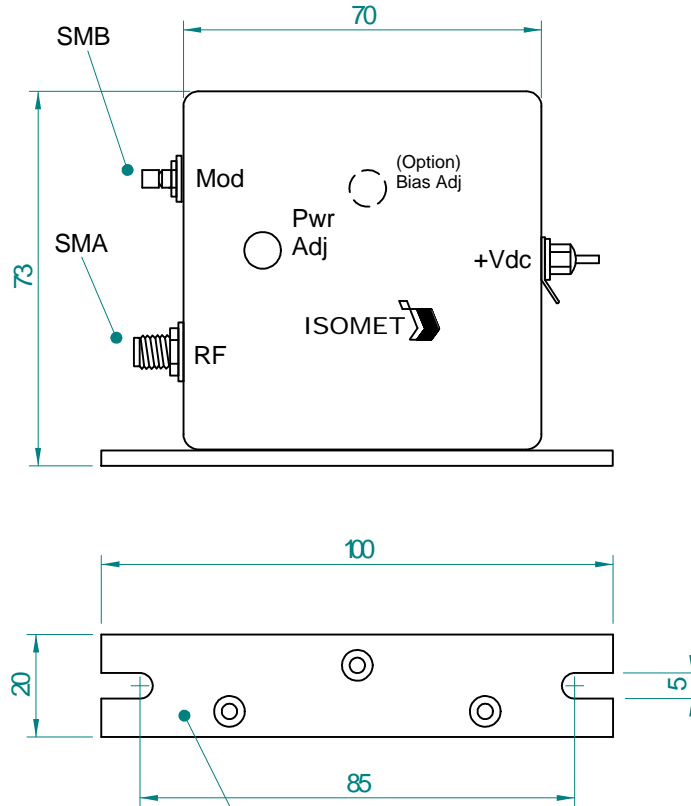


532C-x Series RF Driver



1106

OUTLINE DRAWING



Mounting Flange to Heatsink
Apply Thermal Compound
Max. Temp 70deg C

Dim'n : mm

* Options

Add Suffix

Input BIAS	:	'-B'
0-5V modulation	:	'-V'
0-10V modulation	:	'-X'

(TTL compatible = 522C series)

ALL SPECIFICATIONS SUBJECT TO CHANGE WITHOUT NOTICE

ISOMET CORP, 5263 Port Royal Rd, Springfield, VA 22151, USA.

Tel: (703) 321 8301 Fax: (703) 321 8546

E-mail: ISOMET@ISOMET.COM Web Page: WWW.ISOMET.COM

Quality Assured.

In-house: RF & Digital design

Software Development

OEM manufacture