

1260-1044

Acousto-Optic Modulator



1106

Very High Speed Modulator optimised for visible wavelengths. Low RF emission case design

SPECIFICATIONS

Interaction Material:	TeO ₂ (Longitudinal Mode)
Laser Wavelength:	360-420nm, 488-532nm *
Acoustic Velocity:	4200 m/s
Input Beam Polarization:	Linear, Vertical
Active Aperture:	0.2mm
Clear Aperture:	1 mm
Center Frequency:	350 MHz
RF Bandwidth:	200 MHz

RISETIME vs. BEAM DIAMETER

Input Beam Diameter (um):	75	55	35
Risetime (ns):	12	9	6
Diffraction Efficiency (%):	>80	>80	>72

PERFORMANCE vs. WAVELENGTH

Wavelength(nm):	413	532
RF Drive Power (W):	0.7	1.0
Bragg Angle (mrad):	17.2	22.2
Beam Separation (mrad):	34.4	44.4
Static Insertion Loss (%):	<3	<3

RECOMMENDED RF DRIVE ELECTRONICS

Model 537C (Analog Modulation)

ALL SPECIFICATIONS SUBJECT TO CHANGE WITHOUT NOTICE

ISOMET CORP, 5263 Port Royal Rd, Springfield, VA 22151, USA.

Tel: (703) 321 8301 Fax: (703) 321 8546

E-mail: ISOMET@ISOMET.COM Web Page: WWW.ISOMET.COM

Quality Assured.

**In-house: Crystal Growth,
Optical Polishing,
A/R coating, Vacuum Bonding**



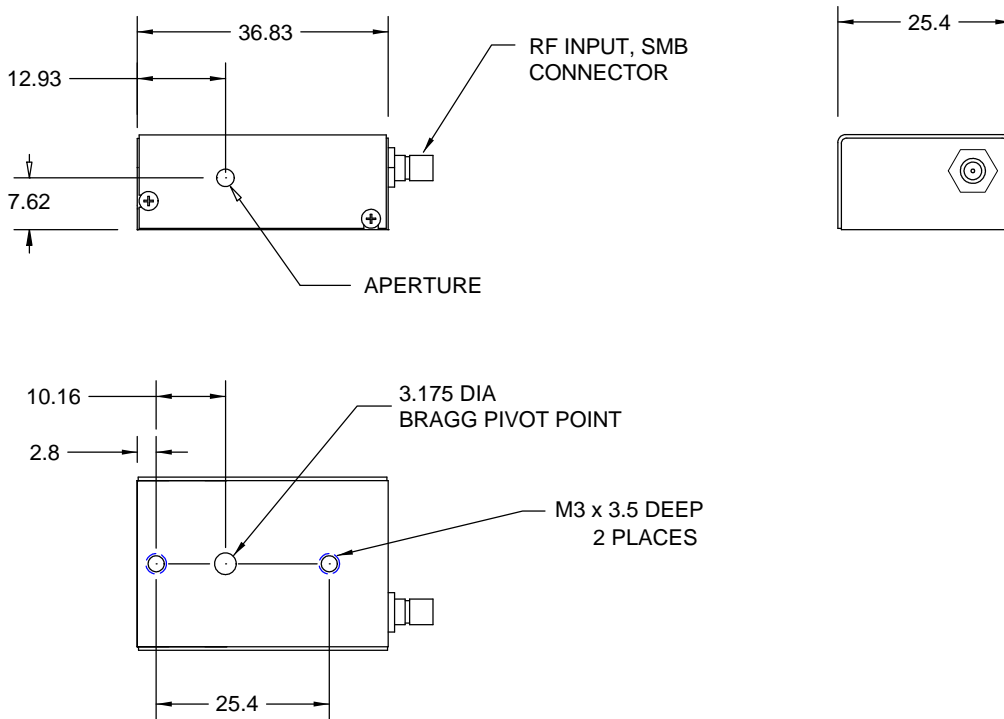
1260-1044

Acousto-Optic Modulator



1106

OUTLINE DRAWING



* [Please contact Isomet for alternative operating wavelengths]

ALL SPECIFICATIONS SUBJECT TO CHANGE WITHOUT NOTICE

ISOMET CORP, 5263 Port Royal Rd, Springfield, VA 22151, USA.

Tel: (703) 321 8301 Fax: (703) 321 8546

E-mail: ISOMET@ISOMET.COM Web Page: WWW.ISOMET.COM

Quality Assured.
In-house: Crystal Growth,
Optical Polishing,
A/R coating, Vacuum Bonding