

1211-5BS-1045



UV Acousto-Optic Modulator/Deflector

(Preliminary Data)

1106

SPECIFICATIONS

Operating Wavelength:	330-360nm (singly or combined)
Centre Frequency (fc):	110MHz
RF Bandwidth:	40MHz
Diffraction Efficiency:	>85% at fc
Input Impedance:	50Ω(Nominal)
Input VSWR:	<1.5:1 @ 110MHz
Active Aperture:	5mm (Nominal)
Optical Insertion Loss:	<3% (<2% typical)
Reflectivity:	<0.5%/Surface
DC Contrast Ratio:	>1000:1 min (2000:1 typical)
Laser Polarization:	Vertical, Perpendicular to Base
Water Cooling (Min):	250ml/minute @ 25 deg C
Outline Dimensions:	(See reverse side)

PERFORMANCE vs. WAVELENGTH

Wavelength (nm):	355
RF Drive Power (Watts):	10.0
Bragg Angle (mrad):	3.4
Separation Angle (mrad)	6.8
Scan Angle 90-130MHz (mrad)	2.5

PERFORMANCE vs. BEAM DIAMETER

Beam Diameter (mm):	5.0	2.0	1.0	.5
Risetime (nsec):	570	227	113	57
Video Bandwidth (MHz):	0.7	1.5	3	6.1

The 1211 UV has been designed specifically for high beam pointing stability and low dynamic wavefront distortion.

Suggested RF Drive Electronics:

Tuneable with modulation Isomet Model RFA333/2

ALL SPECIFICATIONS SUBJECT TO CHANGE WITHOUT NOTICE

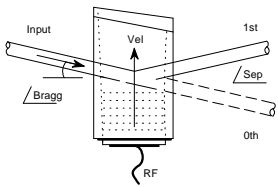
ISOMET CORP, 5263 Port Royal Rd, Springfield, VA 22151, USA.

Tel: (703) 321 8301 Fax: (703) 321 8546

E-mail: ISOMET@ISOMET.COM Web Page: WWW.ISOMET.COM

Quality Assured.

In-house: Crystal Growth,
Optical Polishing,
A/R coating, Vacuum Bonding



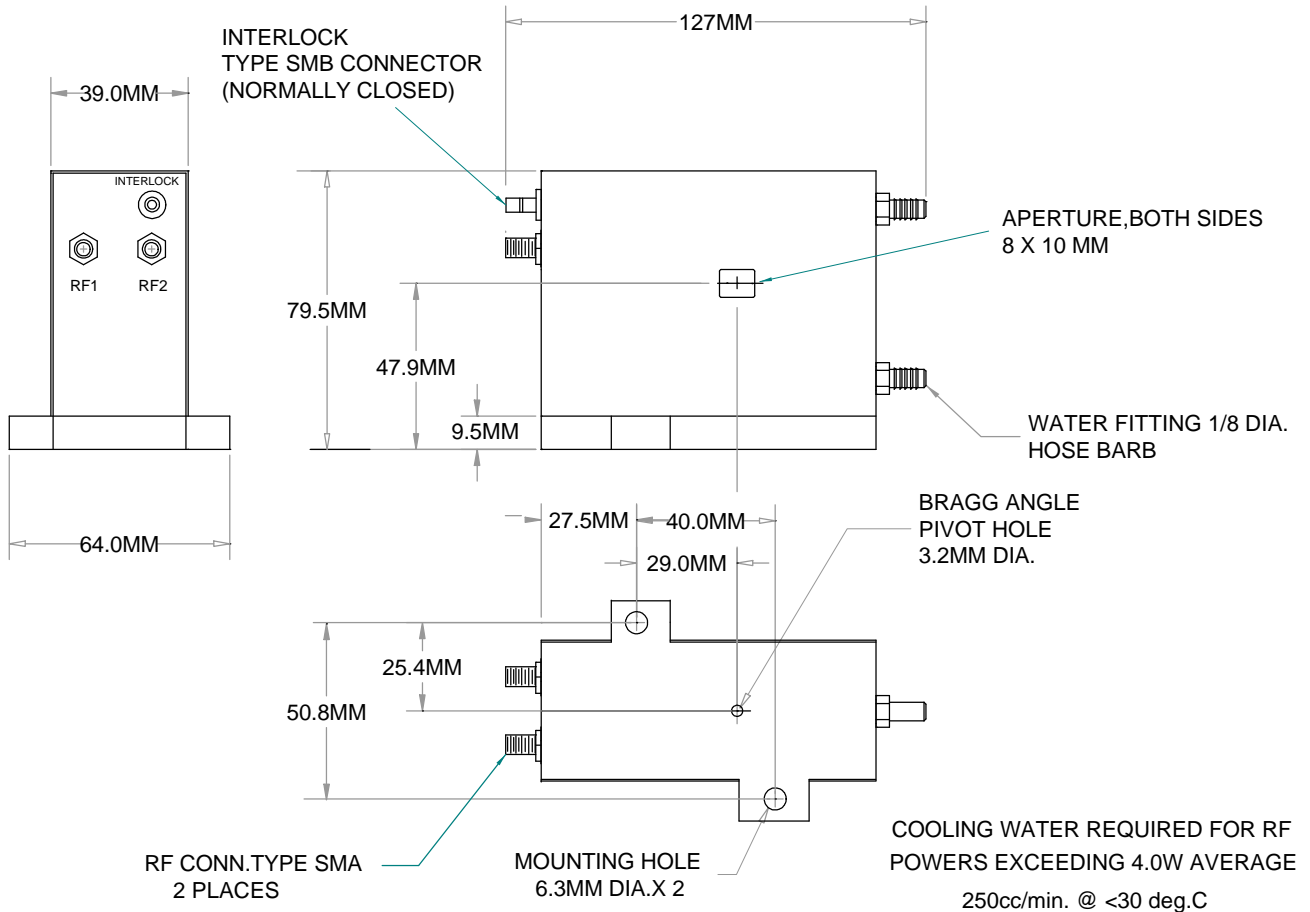
1211-5BS-1045



UV Acousto-Optic Modulator/Deflector (Preliminary Data)

1106

OUTLINE DRAWING



ALL SPECIFICATIONS SUBJECT TO CHANGE WITHOUT NOTICE

ISOMET CORP, 5263 Port Royal Rd, Springfield, VA 22151, USA.

Tel: (703) 321 8301 Fax: (703) 321 8546

E-mail: ISOMET@ISOMET.COM Web Page: WWW.ISOMET.COM

Quality Assured.

In-house: Crystal Growth,
Optical Polishing,
A/R coating, Vacuum Bonding