

1211-3-985



Acousto-Optic Modulator

FOR USE WITH HIGH POWER VISIBLE LASERS*

1106

SPECIFICATIONS

Operating Wavelength:	532nm
Centre Frequency:	110MHz
RF Bandwidth:	20MHz
Input Impedance:	50Ω(Nominal)
Input VSWR:	<1.5:1 @ 110MHz

	<u>Minimum</u>	<u>Typical</u>
Diffraction Efficiency:	85%	90%
Active Aperture Height (at Bragg Point A) **:	2.7mm	3.0mm
Optical Insertion Loss:	3%	2.2%
Reflectivity/surface:	0.7%	0.5%
DC Contrast Ratio:	1000:1	2500:1

Laser Polarization:	Vertical, Perpendicular to Base
First order orientation:	Towards transducer preferred.
Water Cooling (Min):	250ml/minute @ 25 degC
	Anti-corrosion additives recommended
Outline Dimensions:	(See reverse side)

PERFORMANCE vs. WAVELENGTH

Wavelength (nm):	515	532
RF Drive Power (Watts):	12 (Nominal)	14 (Nominal)
Bragg Angle (mrad):	4.9	5.1
Separation Angle (mrad)	9.9	10.2

PERFORMANCE vs. BEAM DIAMETER

Beam Diameter (mm):	3.0	2.0	1.0	0.5
Risetime (nsec):	342	227	113	57
Video Bandwidth (MHz):	1	1.5	3	6.1

Notes:

* The performance of the Model 1211 was evaluated using a 20W Argon-ion laser with various input beam diameters and optical power levels. These tests were conducted continuously over a period of several months. Throughout, the Model 1211 performed exceptionally well, particularly in terms of beam pointing stability and low wavefront distortion

** Aperture height specified to FWHH points

RF Drive Electronics

RFA2110 (water cooled) or RFA910-110 (air cooled)

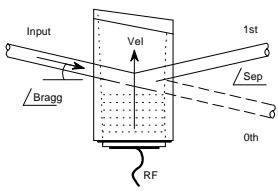
ALL SPECIFICATIONS SUBJECT TO CHANGE WITHOUT NOTICE

ISOMET CORP, 5263 Port Royal Rd, Springfield, VA 22151, USA.

Tel: (703) 321 8301 Fax: (703) 321 8546

E-mail: ISOMET@ISOMET.COM Web Page: WWW.ISOMET.COM

Quality Assured.
In-house: Crystal Growth,
Optical Polishing,
A/R coating, Vacuum Bonding



1211-3-985

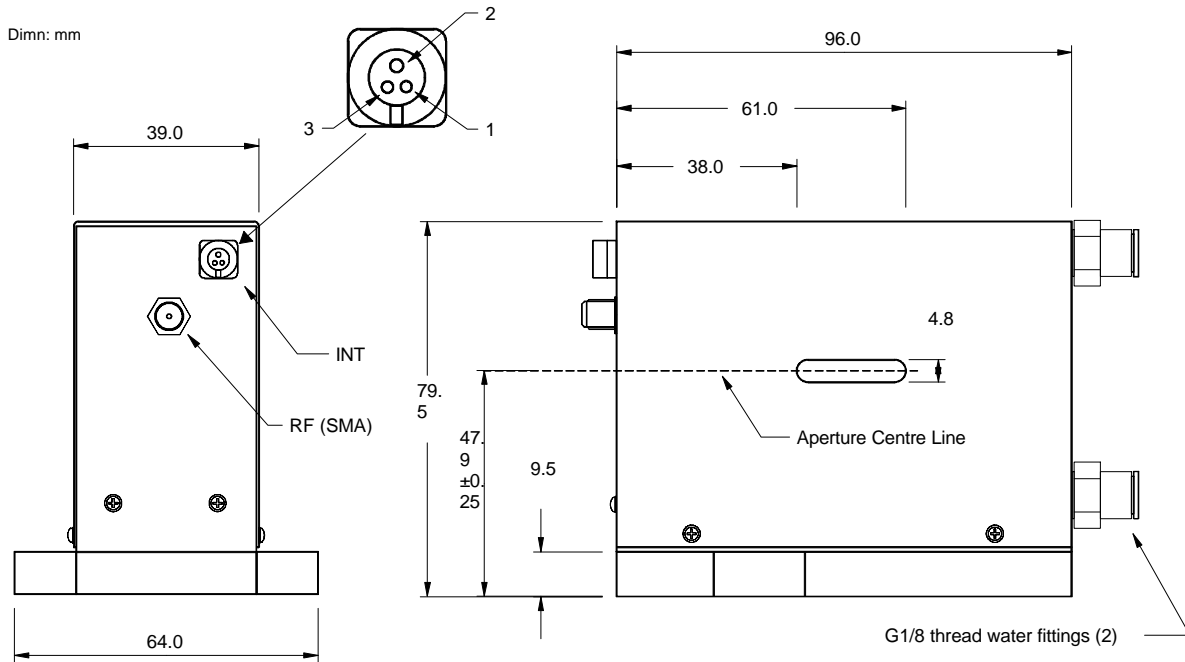


Acousto-Optic Modulator

FOR USE WITH HIGH POWER VISIBLE LASERS*

1106

OUTLINE DRAWING



Cooling Water required for RF powers exceeding 4.0W average

250cc/min at < 25degC

Isolated Thermal Interlock Connector (INT)

Sub-miniature snap lock 3 pin to IP40

Normally closed contacts 1 to 2

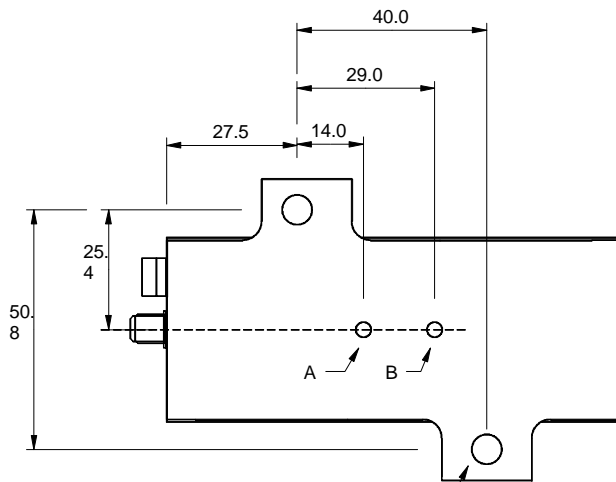
Opens at > 40 deg C

Pin 3 not connected

Bragg Pivot Points 3.2mm dia.

Point A: Modulator

Point B: Deflector



Mounting Hole (2) 6.3mm dia.

ALL SPECIFICATIONS SUBJECT TO CHANGE WITHOUT NOTICE

ISOMET CORP, 5263 Port Royal Rd, Springfield, VA 22151, USA.

Tel: (703) 321 8301 Fax: (703) 321 8546

E-mail: ISOMET@ISOMET.COM

Web Page: WWW.ISOMET.COM

Quality Assured.

In-house: Crystal Growth,

Optical Polishing,

A/R coating, Vacuum Bonding