

LS110A-NIR-XY

Dual Axis AO Deflector



0417

The LS110A-NIR-XY provides high speed simultaneous vertical and horizontal axis beam position control at near IR wavelengths. It is comprised of two orthogonally-mounted single axis TeO₂ deflectors which sequentially diffract the input laser beam to generate a N x N matrix. The LS110-XY may be operated in raster (linear), random access and vector scanning modes from the same RF drive electronics. It is well suited for applications requiring accurate beam placement at high speed, such as laser range finding, optical tweezers and laser pantography.

FEATURES

- UNIFORM SCAN INTENSITY:** The LS110 series have been designed to maintain the Bragg relationship over the specified RF frequency bandwidth. This results in a uniform diffracted beam intensity across the full scan angles of both axes.
- CIRCULAR INPUT APERTURE:** Complex and costly anamorphic input beam shaping optics are not necessary to produce the high resolution scan. Any required beam shaping may be accomplished with simple spherical optics.
- HIGH THROUGHPUT EFFICIENCY:** Up to 25% of the incident laser beam is diffracted to the XY image plane.
- HIGH OPTICAL POWER:** The LS110-XY may be operated with up to 8 Watts CW laser power (6mm or larger input beam diameter).

RF DRIVE ELECTRONICS

VCO driver/amplifier:	2 off - D32x-BS / D33x-BS series
Fast tuning Synthesizer:	1 off - iMS4-L (or -P) synthesizer plus iMPA4-1W amplifier
Amplifier only:	2 off - DA134-p-xxx (with Integral Phase shifting)

SPECIFICATIONS

Input Laser Polarization:	Linear
Output Laser Polarization:	Circular (nominal)
Input Impedance:	50Ω (nominal)

ALL SPECIFICATIONS SUBJECT TO CHANGE WITHOUT NOTICE

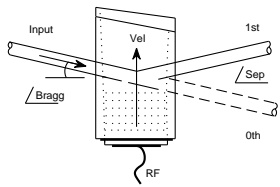
ISOMET CORP, 5263 Port Royal Rd, Springfield, VA 22151, USA.

Tel: (703) 321 8301 Fax: (703) 321 8546

E-mail: ISOMET@ISOMET.COM Web Page: WWW.ISOMET.COM

Quality Assured.

In-house: Crystal Growth,
Optical Polishing,
A/R coating, Vacuum Bonding



LS110A-NIR-XY

Dual Axis AO Deflector

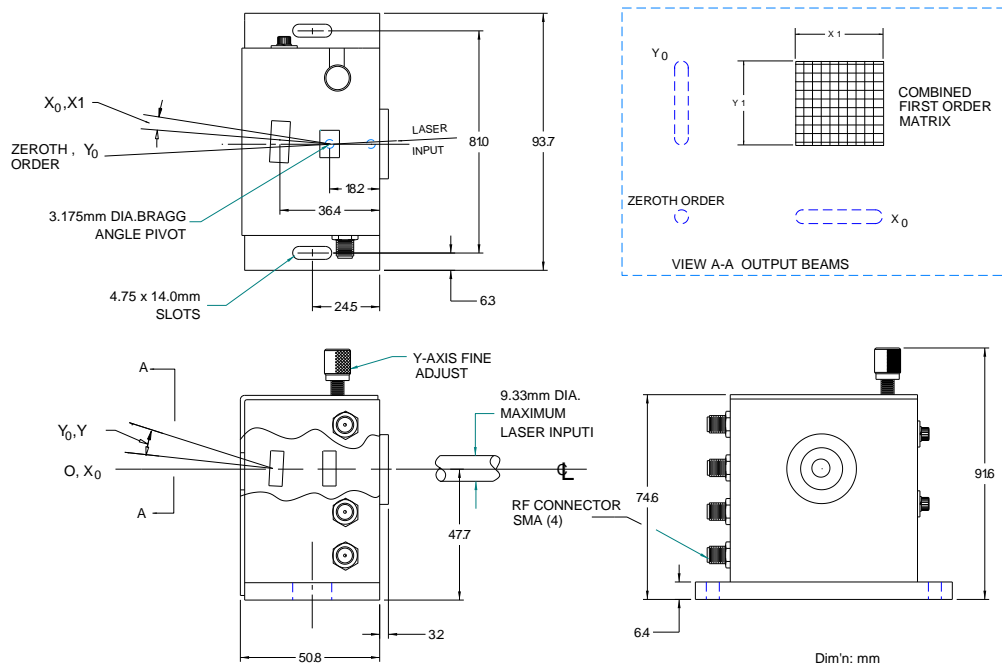


0417

SPECIFICATIONS vs. WAVELENGTH

	<u>LS110A-830-XY</u>	<u>LS110A-1064-XY</u>	<u>LS110(HF)-1.06XY</u>	<u>LS110A-1.35-XY</u>	<u>LS110A-1.5-XY</u>
Wavelength **:	830nm	1064nm	1064nm	1.35um	1.55um
Centre Freq. (Nom)	50MHz	50MHz	70MHz	50MHz	50MHz
Bandwidth Δf:	25MHz	25MHz	40MHz	25MHz	25MHz
Scan Angle/Axis:	1.9°	2.5°	3.95°	3.1°	3.6°
fc Separation Angle:	3.9°	4.9°	6.91°	6.2°	7.2°
Aperture	9.3mm	9.3mm	6.2mm	6mm	5mm
Access Time τ:	15μs	15μs	10μs	9.7μs	8.1μs
Resolution	375x375	375x375	400x400	240x240	200x200
Throughput efficiency	25%	25%	20%	16%	8%

OUTLINE DRAWING



ALL SPECIFICATIONS SUBJECT TO CHANGE WITHOUT NOTICE

ISOMET CORP, 5263 Port Royal Rd, Springfield, VA 22151, USA.

Tel: (703) 321 8301 Fax: (703) 321 8546

E-mail: ISOMET@ISOMET.COM Web Page: WWW.ISOMET.COM

Quality Assured.

In-house: Crystal Growth,
Optical Polishing,
A/R coating, Vacuum Bonding